

Product datasheet for **TA339949**

C18orf25 Rabbit Polyclonal Antibody

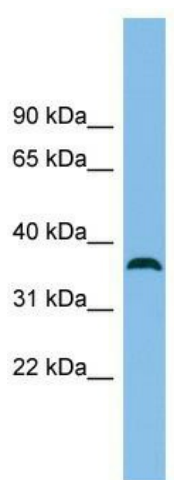
Product data:

| | |
|-------------------------|---|
| Product Type: | Primary Antibodies |
| Applications: | WB |
| Recommended Dilution: | WB |
| Reactivity: | Human |
| Host: | Rabbit |
| Isotype: | IgG |
| Clonality: | Polyclonal |
| Immunogen: | The immunogen for anti-C18orf25 antibody: synthetic peptide directed towards the N terminal of human C18orf25. Synthetic peptide located within the following region: MKMEEAVGKVEELIESEAPPKASEQETAKEEDGSVELESQVQKDGVDST |
| Formulation: | Liquid. Purified antibody supplied in 1x PBS buffer with 0.09% (w/v) sodium azide and 2% sucrose. |
| Concentration: | lot specific |
| Purification: | Affinity Purified |
| Conjugation: | Unconjugated |
| Storage: | Store at -20°C as received. |
| Stability: | Stable for 12 months from date of receipt. |
| Predicted Protein Size: | 37 kDa |
| Gene Name: | chromosome 18 open reading frame 25 |
| Database Link: | NP_001008240 Entrez Gene 147339 Human Q96B23 |
| Background: | The exact function of C18orf25 remains unknown. |
| Synonyms: | ARKL1; RNF111L1 |
| Note: | Immunogen Sequence Homology: Human: 100%; Mouse: 100%; Dog: 93%; Rat: 93%; Rabbit: 93%; Pig: 86%; Horse: 86%; Bovine: 86% |



[View online »](#)

Product images:



WB Suggested Anti-C18orf25 Antibody Titration:
0.2-1 ug/ml; ELISA Titer: 1: 12500; Positive
Control: U937 cell lysate