

Product datasheet for **TA339947**

Dysferlin interacting protein 1 (PPP1R27) Rabbit Polyclonal Antibody

Product data:

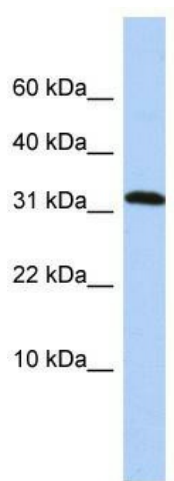
Product Type:	Primary Antibodies
Applications:	WB
Recommended Dilution:	WB
Reactivity:	Human
Host:	Rabbit
Isotype:	IgG
Clonality:	Polyclonal
Immunogen:	The immunogen for anti-DYSFIP1 antibody: synthetic peptide directed towards the middle region of human DYSFIP1. Synthetic peptide located within the following region: DHIRQGDLEQVGRFIRTRKVS LATIHPSGLAALHEAVLSGNLECVKLLVK
Formulation:	Liquid. Purified antibody supplied in 1x PBS buffer with 0.09% (w/v) sodium azide and 2% sucrose.
Concentration:	lot specific
Purification:	Affinity Purified
Conjugation:	Unconjugated
Storage:	Store at -20°C as received.
Stability:	Stable for 12 months from date of receipt.
Predicted Protein Size:	17 kDa
Gene Name:	protein phosphatase 1 regulatory subunit 27
Database Link:	NP_001007534 Entrez Gene 116729 Human Q86WC6
Background:	The exact function of DYSFIP1 remains unknown. Western blots using two different antibodies against two unique regions of this protein target confirm the same apparent molecular weight in our tests.
Synonyms:	DYSFIP1



[View online »](#)

Note: Immunogen Sequence Homology: Dog: 100%; Pig: 100%; Rat: 100%; Horse: 100%; Human: 100%; Mouse: 100%; Bovine: 100%; Guinea pig: 100%

Product images:



WB Suggested Anti-DYSFIP1 Antibody Titration:
0.2-1 ug/ml; ELISA Titer: 1: 12500; Positive
Control: HepG2 cell lysate