

Product datasheet for TA339946

KLHDC9 Rabbit Polyclonal Antibody

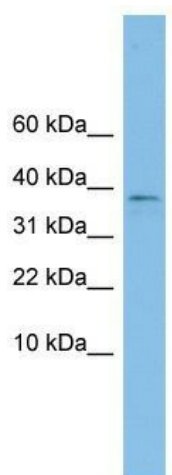
Product data:

Product Type:	Primary Antibodies
Applications:	WB
Recommended Dilution:	WB
Reactivity:	Human
Host:	Rabbit
Isotype:	IgG
Clonality:	Polyclonal
Immunogen:	The immunogen for anti-KLHDC9 antibody: synthetic peptide directed towards the middle region of human KLHDC9. Synthetic peptide located within the following region: AEPEVAGHWSHGKIKEEPPVAPHLMEQLARLVSSGQGSQKGPGLRHHSC
Formulation:	Liquid. Purified antibody supplied in 1x PBS buffer with 0.09% (w/v) sodium azide and 2% sucrose.
Concentration:	lot specific
Purification:	Affinity Purified
Conjugation:	Unconjugated
Storage:	Store at -20°C as received.
Stability:	Stable for 12 months from date of receipt.
Predicted Protein Size:	38 kDa
Gene Name:	kelch domain containing 9
Database Link:	NP_689579 Entrez Gene 126823 Human Q8NEP7
Background:	The function of this protein remains unknown.
Synonyms:	KARCA1
Note:	Immunogen Sequence Homology: Human: 100%; Horse: 92%; Bovine: 85%; Mouse: 79%



[View online »](#)

Product images:



WB Suggested Anti-KLHDC9 Antibody Titration:
0.2-1 ug/ml; ELISA Titer: 1: 1562500; Positive
Control: OVCAR-3 cell lysate