

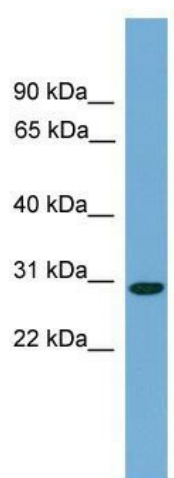
Product datasheet for TA339945

LKAAEAR1 Rabbit Polyclonal Antibody

Product data:

Product Type:	Primary Antibodies
Applications:	WB
Recommended Dilution:	WB
Reactivity:	Human
Host:	Rabbit
Isotype:	IgG
Clonality:	Polyclonal
Immunogen:	The immunogen for anti-C20orf201 antibody: synthetic peptide directed towards the C terminal of human LOC198437. Synthetic peptide located within the following region: PGRGGERGGALPASAHAGPQLSPAAREARGDHPGGERGWHHLPAVTATESV
Formulation:	Liquid. Purified antibody supplied in 1x PBS buffer with 0.09% (w/v) sodium azide and 2% sucrose.
Concentration:	lot specific
Purification:	Affinity Purified
Conjugation:	Unconjugated
Storage:	Store at -20°C as received.
Stability:	Stable for 12 months from date of receipt.
Predicted Protein Size:	26 kDa
Gene Name:	LKAAEAR motif containing 1
Database Link:	NP_001007126 Entrez Gene 198437 Human Q8TD35
Background:	The function of LOC198437 remains unknown.
Synonyms:	C20orf201
Note:	Immunogen Sequence Homology: Human: 100%; Dog: 92%


[View online »](#)

Product images:


WB Suggested Anti-C20orf201 Antibody Titration:
0.2-1 ug/ml; ELISA Titer: 1: 312500; Positive
Control: Human Liver