

## Product datasheet for **TA339944**

### MTX2 Rabbit Polyclonal Antibody

#### Product data:

Product Type:	Primary Antibodies
Applications:	IF, WB
Recommended Dilution:	WB, IF
Reactivity:	Human
Host:	Rabbit
Isotype:	IgG
Clonality:	Polyclonal
Immunogen:	The immunogen for anti-MTX2 antibody: synthetic peptide directed towards the N terminal of human MTX2. Synthetic peptide located within the following region: YIAAEPWPENATLYQQLKGEQILLSDNAASLAVQAFLQMCNLPKVVCR
Formulation:	Liquid. Purified antibody supplied in 1x PBS buffer with 0.09% (w/v) sodium azide and 2% sucrose. <i>Note that this product is shipped as lyophilized powder to China customers.</i>
Concentration:	lot specific
Purification:	Affinity Purified
Conjugation:	Unconjugated
Storage:	Store at -20°C as received.
Stability:	Stable for 12 months from date of receipt.
Predicted Protein Size:	29 kDa
Gene Name:	metaxin 2
Database Link:	<a href="#">NP_001006636</a> <a href="#">Entrez Gene 10651 Human</a> <a href="#">O75431</a>



[View online »](#)

**Background:**

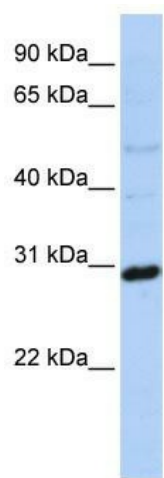
MTX2 is highly similar to the metaxin 2 protein from mouse, which has been shown to interact with the mitochondrial membrane protein metaxin 1. Because of this similarity, it is thought that the encoded protein is peripherally associated with the cytosolic face of the outer mitochondrial membrane and be involved in the import of proteins into the mitochondrion. The protein encoded by this gene is highly similar to the metaxin 2 protein from mouse, which has been shown to interact with the mitochondrial membrane protein metaxin 1. Because of this similarity, it is thought that the encoded protein is peripherally associated with the cytosolic face of the outer mitochondrial membrane and be involved in the import of proteins into the mitochondrion. Two transcript variants encoding different isoforms have been found for this gene.

**Synonyms:**

metaxin 2; MGC111067

**Note:**

Immunogen Sequence Homology: Dog: 100%; Pig: 100%; Rat: 100%; Horse: 100%; Human: 100%; Bovine: 100%; Rabbit: 100%; Guinea pig: 100%; Mouse: 93%

**Product images:**

WB Suggested Anti-MTX2 Antibody Titration: 0.2-1 ug/ml; ELISA Titer: 1: 12500; Positive Control: Jurkat cell lysate MTX2 is supported by BioGPS gene expression data to be expressed in Jurkat