

Product datasheet for **TA339939**

S adenosylhomocysteine hydrolase (AHCY) Rabbit Polyclonal Antibody

Product data:

Product Type:	Primary Antibodies
Applications:	WB
Recommended Dilution:	WB
Reactivity:	Human
Host:	Rabbit
Isotype:	IgG
Clonality:	Polyclonal
Immunogen:	The immunogen for anti-AHCY antibody: synthetic peptide directed towards the N terminal of human AHCY.
Formulation:	Liquid. Purified antibody supplied in 1x PBS buffer with 0.09% (w/v) sodium azide and 2% sucrose. <i>Note that this product is shipped as lyophilized powder to China customers.</i>
Concentration:	lot specific
Purification:	Affinity Purified
Conjugation:	Unconjugated
Storage:	Store at -20°C as received.
Stability:	Stable for 12 months from date of receipt.
Predicted Protein Size:	48 kDa
Gene Name:	adenosylhomocysteinase
Database Link:	NP_000678 Entrez Gene 191 Human P23526



[View online »](#)

Background:

S-adenosylhomocysteine hydrolase catalyzes the reversible hydrolysis of S-adenosylhomocysteine (AdoHcy) to adenosine (Ado) and L-homocysteine (Hcy). Thus, it regulates the intracellular S-adenosylhomocysteine (SAH) concentration thought to be important for transmethylation reactions. Deficiency in this protein is one of the different causes of hypermethioninemia. S-adenosylhomocysteine hydrolase belongs to the adenosylhomocysteinase family. S-adenosylhomocysteine hydrolase catalyzes the reversible hydrolysis of S-adenosylhomocysteine (AdoHcy) to adenosine (Ado) and L-homocysteine (Hcy). Thus, it regulates the intracellular S-adenosylhomocysteine (SAH) concentration thought to be important for transmethylation reactions. Deficiency in this protein is one of the different causes of hypermethioninemia. S-adenosylhomocysteine hydrolase belongs to the adenosylhomocysteinase family. Publication Note: This RefSeq record includes a subset of the publications that are available for this gene. Please see the Entrez Gene record to access additional publications.

Synonyms:

adoHcyase; SAHH

Note:

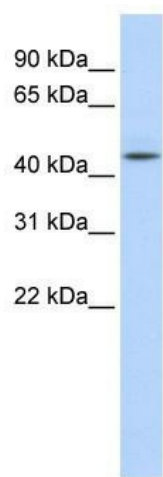
Immunogen Sequence Homology: Rat: 100%; Human: 100%; Mouse: 100%; Rabbit: 100%; Dog: 93%; Horse: 93%; Bovine: 93%; Pig: 86%; Zebrafish: 79%

Protein Families:

Druggable Genome

Protein Pathways:

Cysteine and methionine metabolism, Metabolic pathways, Selenoamino acid metabolism

Product images:

WB Suggested Anti-AHCY Antibody Titration: 0.2-1 ug/ml; ELISA Titer: 1: 62500; Positive Control: Human Liver