

Product datasheet for **TA339935**

Cyp1b1 Rabbit Polyclonal Antibody

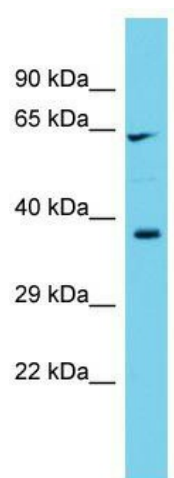
Product data:

Product Type:	Primary Antibodies
Applications:	WB
Recommended Dilution:	WB
Reactivity:	Rat
Host:	Rabbit
Isotype:	IgG
Clonality:	Polyclonal
Immunogen:	The immunogen for Anti-Cyp1b1 antibody is: synthetic peptide directed towards the C-terminal region of human CYP1B1
Formulation:	Liquid. Purified antibody supplied in 1x PBS buffer with 0.09% (w/v) sodium azide and 2% sucrose. <i>Note that this product is shipped as lyophilized powder to China customers.</i>
Concentration:	lot specific
Purification:	Affinity Purified
Conjugation:	Unconjugated
Storage:	Store at -20°C as received.
Stability:	Stable for 12 months from date of receipt.
Predicted Protein Size:	59 kDa
Gene Name:	cytochrome P450, family 1, subfamily b, polypeptide 1
Database Link:	NP_037072 Entrez Gene 25426 Rat Q64678
Background:	Cyp1b1 plays a role in polycyclic aromatic hydrocarbon metabolism in adrenal microsomes.
Synonyms:	CP1B; CYPIB1; GLC3A; OTTHUMP00000201401; P4501B1
Note:	Immunogen Sequence Homology: Pig: 100%; Rat: 100%; Horse: 100%; Human: 100%; Mouse: 100%; Bovine: 100%; Rabbit: 100%; Zebrafish: 100%; Guinea pig: 100%; Dog: 93%



[View online »](#)

Product images:



Host: Rabbit; Target Name: Cyp1b1; Sample
Tissue: Rat Testis lysates; Antibody Dilution: 1.0
ug/ml