

Product datasheet for **TA339934**

CYP1B1 Rabbit Polyclonal Antibody

Product data:

Product Type:	Primary Antibodies
Applications:	WB
Recommended Dilution:	WB
Reactivity:	Human
Host:	Rabbit
Isotype:	IgG
Clonality:	Polyclonal
Immunogen:	The immunogen for Anti-Cyp1b1 antibody is: synthetic peptide directed towards the middle region of human CYP1B1
Formulation:	Liquid. Purified antibody supplied in 1x PBS buffer with 0.09% (w/v) sodium azide and 2% sucrose. <i>Note that this product is shipped as lyophilized powder to China customers.</i>
Concentration:	lot specific
Purification:	Affinity Purified
Conjugation:	Unconjugated
Storage:	Store at -20°C as received.
Stability:	Stable for 12 months from date of receipt.
Predicted Protein Size:	61 kDa
Gene Name:	cytochrome P450 family 1 subfamily B member 1
Database Link:	NP_000095 Entrez Gene 1545 Human Q16678



[View online »](#)

Background:

CYP1B1 is a member of the cytochrome P450 superfamily of enzymes. The cytochrome P450 proteins are monooxygenases which catalyze many reactions involved in drug metabolism and synthesis of cholesterol, steroids and other lipids. CYP1B1 localizes to the endoplasmic reticulum and metabolizes procarcinogens such as polycyclic aromatic hydrocarbons and 17beta-estradiol. Mutations in this gene have been associated with primary congenital glaucoma; therefore it is thought that the enzyme also metabolizes a signaling molecule involved in eye development, possibly a steroid. This gene encodes a member of the cytochrome P450 superfamily of enzymes. The cytochrome P450 proteins are monooxygenases which catalyze many reactions involved in drug metabolism and synthesis of cholesterol, steroids and other lipids. The enzyme encoded by this gene localizes to the endoplasmic reticulum and metabolizes procarcinogens such as polycyclic aromatic hydrocarbons and 17beta-estradiol. Mutations in this gene have been associated with primary congenital glaucoma; therefore it is thought that the enzyme also metabolizes a signaling molecule involved in eye development, possibly a steroid. Publication Note: This RefSeq record includes a subset of the publications that are available for this gene. Please see the Entrez Gene record to access additional publications.

Synonyms:

CP1B; CYP1B1; GLC3A; P4501B1

Note:

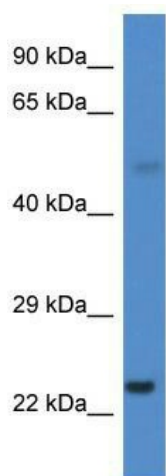
Immunogen Sequence Homology: Dog: 100%; Pig: 100%; Rat: 100%; Human: 100%; Mouse: 100%; Bovine: 100%; Rabbit: 100%; Guinea pig: 100%; Horse: 93%

Protein Families:

Druggable Genome, P450

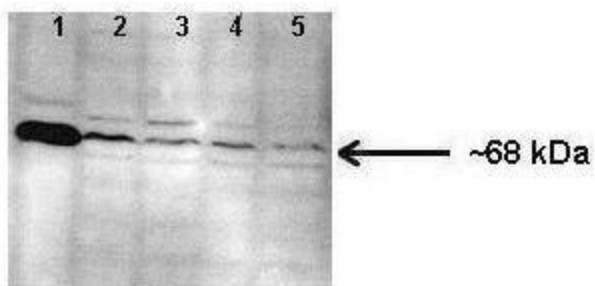
Protein Pathways:

Metabolism of xenobiotics by cytochrome P450, Tryptophan metabolism

Product images:


WB Suggested Anti-CYP1B1 Antibody Titration:
0.2-1 ug/ml; Positive Control: Human Liver

CYP1B1



Lanes: Lane 1: Human lung microsome lysate;
 Lane 2-5: 150 ug mouse lung microsome lysate;
 Primary Antibody Dilution: 1: 1000; Secondary
 Antibody: Anti-rabbit HRP; Secondary Antibody
 Dilution: 1: 10000; Gene Name: CYP1B1;
 Submitted by: Jing Peng, Fox Chase