

Product datasheet for **TA339933**

CETP Rabbit Polyclonal Antibody

Product data:

Product Type:	Primary Antibodies
Applications:	WB
Recommended Dilution:	WB
Reactivity:	Human
Host:	Rabbit
Isotype:	IgG
Clonality:	Polyclonal
Immunogen:	The immunogen for anti-CETP antibody: synthetic peptide directed towards the middle region of human CETP.
Formulation:	Liquid. Purified antibody supplied in 1x PBS buffer with 0.09% (w/v) sodium azide and 2% sucrose. <i>Note that this product is shipped as lyophilized powder to China customers.</i>
Concentration:	lot specific
Purification:	Affinity Purified
Conjugation:	Unconjugated
Storage:	Store at -20°C as received.
Stability:	Stable for 12 months from date of receipt.
Predicted Protein Size:	53 kDa
Gene Name:	cholesteryl ester transfer protein
Database Link:	NP_000069 Entrez Gene 1071 Human P11597
Background:	CETP involved in the transfer of insoluble cholesteryl esters in the reverse transport of cholesterol. Defects in CETP are a cause of hyperalphalipoproteinemia. Cholesteryl ester transfer protein (CETP) transfers cholesteryl esters between lipoproteins. CETP may effect susceptibility to atherosclerosis. Publication Note: This RefSeq record includes a subset of the publications that are available for this gene. Please see the Entrez Gene record to access additional publications.



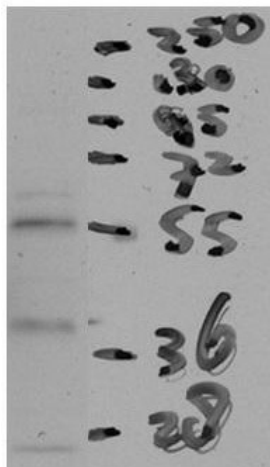
[View online »](#)

Synonyms: BPIFF; HDLCQ10

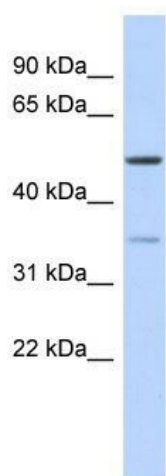
Note: Immunogen Sequence Homology: Human: 100%

Protein Families: Druggable Genome, Secreted Protein

Product images:



CETP antibody - middle region validated by WB using Human Muscle lysate at 1: 1000.



WB Suggested Anti-CETP Antibody Titration: 0.2-1 ug/ml; ELISA Titer: 1: 1562500; Positive Control: Human Thymus