

Product datasheet for TA339929

MSF (SEPT9) Rabbit Polyclonal Antibody

Product data:

| | |
|-------------------------|--|
| Product Type: | Primary Antibodies |
| Applications: | WB |
| Recommended Dilution: | WB |
| Reactivity: | Human |
| Host: | Rabbit |
| Isotype: | IgG |
| Clonality: | Polyclonal |
| Immunogen: | The immunogen for anti-SEPT9(septin 9) antibody: synthetic peptide directed towards the middle region of human SEPT9(septin 9) |
| Formulation: | Liquid. Purified antibody supplied in 1x PBS buffer with 0.09% (w/v) sodium azide and 2% sucrose. <i>Note that this product is shipped as lyophilized powder to China customers.</i> |
| Concentration: | lot specific |
| Purification: | Affinity Purified |
| Conjugation: | Unconjugated |
| Storage: | Store at -20°C as received. |
| Stability: | Stable for 12 months from date of receipt. |
| Predicted Protein Size: | 46 kDa |
| Gene Name: | septin 9 |
| Database Link: | NP_001106964 Entrez Gene 10801 Human Q9UHD8 |
| Background: | This gene is a member of the septin family involved in cytokinesis and cell cycle control. This gene is a candidate for the ovarian tumor suppressor gene. Mutations in this gene cause hereditary neuralgic amyotrophy, also known as neuritis with brachial predilection. A chromosomal translocation involving this gene on chromosome 17 and the MLL gene on chromosome 11 results in acute myelomonocytic leukemia. Multiple alternatively spliced transcript variants encoding different isoforms have been described. |



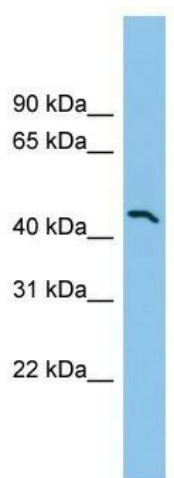
[View online »](#)

Synonyms: AF17q25; MSF; MSF1; NAPB; PNUTL4; SeptD1; SINT1

Note: Immunogen Sequence Homology: Dog: 100%; Pig: 100%; Rat: 100%; Horse: 100%; Human: 100%; Mouse: 100%; Bovine: 100%; Guinea pig: 100%; Zebrafish: 92%; Rabbit: 86%

Protein Families: Druggable Genome

Product images:



WB Suggested Anti-SEPT9 Antibody Titration: 0.2-1 ug/ml; ELISA Titer: 1: 62500; Positive Control: HCT15 cell lysate