

## Product datasheet for **TA339928**

### MSF (SEPT9) Rabbit Polyclonal Antibody

#### Product data:

Product Type:	Primary Antibodies
Applications:	WB
Recommended Dilution:	WB
Reactivity:	Human
Host:	Rabbit
Isotype:	IgG
Clonality:	Polyclonal
Immunogen:	The immunogen for anti-SEPT9(septin 9) antibody: synthetic peptide directed towards the C terminal of human SEPT9(septin 9)
Formulation:	Liquid. Purified antibody supplied in 1x PBS buffer with 0.09% (w/v) sodium azide and 2% sucrose. <i>Note that this product is shipped as lyophilized powder to China customers.</i>
Concentration:	lot specific
Purification:	Affinity Purified
Conjugation:	Unconjugated
Storage:	Store at -20°C as received.
Stability:	Stable for 12 months from date of receipt.
Predicted Protein Size:	37 kDa
Gene Name:	septin 9
Database Link:	<a href="#">NP_001106968</a> <a href="#">Entrez Gene 10801 Human</a> <a href="#">Q9UHD8</a>
Background:	Septin-9 is a member of the septin family, which contains cytoplasmic cytoskeletal filament-forming proteins that have a conserved GTP-binding domain. Septin-9 is a member of the septin family, which contains cytoplasmic cytoskeletal filament-forming proteins that have a conserved GTP-binding domain (Osaka et al., 1999 [PubMed 10339604]). [supplied by OMIM]. Publication Note: This RefSeq record includes a subset of the publications that are available for this gene. Please see the Entrez Gene record to access additional publications.



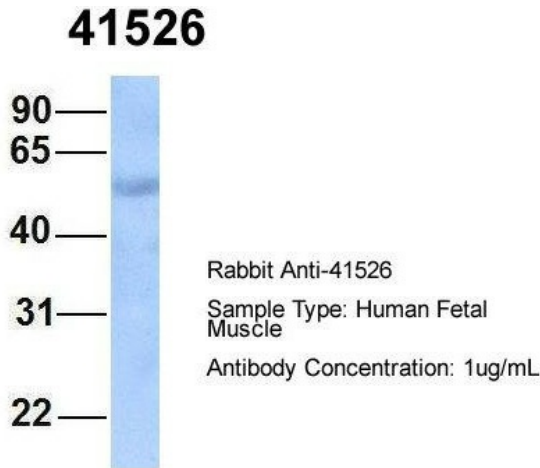
[View online »](#)

**Synonyms:** AF17q25; MSF; MSF1; NAPB; PNUTL4; SeptD1; SINT1

**Note:** Immunogen Sequence Homology: Pig: 100%; Rat: 100%; Human: 100%; Mouse: 100%; Guinea pig: 100%; Dog: 93%; Bovine: 93%; Horse: 86%; Rabbit: 83%; Zebrafish: 83%

**Protein Families:** Druggable Genome

**Product images:**



Host: Rabbit; Target Name: SEPT9; Sample Tissue: Human Fetal Muscle; Antibody Dilution: 1.0 ug/ml



WB Suggested Anti-SEPT9 (septin 9) Antibody Titration: 0.2-1 ug/ml; Positive Control: HepG2 cell lysate SEPT9 (septin 9) is strongly supported by BioGPS gene expression data to be expressed in Human HepG2 cells