

## Product datasheet for **TA339925**

### FUBP3 Rabbit Polyclonal Antibody

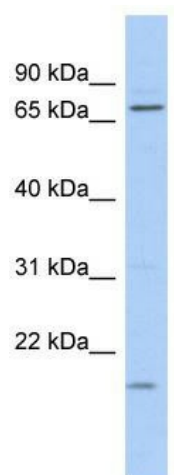
#### Product data:

|                         |   |
|-------------------------|---|
| Product Type:           | Primary Antibodies  |
| Applications:           | WB  |
| Recommended Dilution:   | WB  |
| Reactivity:             | Human   |
| Host:                   | Rabbit  |
| Isotype:                | IgG   |
| Clonality:              | Polyclonal  |
| Immunogen:              | The immunogen for anti-FUBP3 antibody: synthetic peptide directed towards the N terminal of human FUBP3.  |
| Formulation:            | Liquid. Purified antibody supplied in 1x PBS buffer with 0.09% (w/v) sodium azide and 2% sucrose.<br><i>Note that this product is shipped as lyophilized powder to China customers.</i> |
| Concentration:          | lot specific  |
| Purification:           | Affinity Purified   |
| Conjugation:            | Unconjugated  |
| Storage:                | Store at -20°C as received.   |
| Stability:              | Stable for 12 months from date of receipt.  |
| Predicted Protein Size: | 62 kDa  |
| Gene Name:              | far upstream element binding protein 3  |
| Database Link:          | <a href="#">NP_003925</a><br><a href="#">Entrez Gene 8939 Human</a><br><a href="#">Q96I24</a>   |
| Background:             | FUBP3 may interact with single-stranded DNA from the far-upstream element (FUSE). FUBP3 may activate gene expression.   |
| Synonyms:               | FBP3  |
| Note:                   | Immunogen Sequence Homology: Dog: 100%; Pig: 100%; Rat: 100%; Human: 100%; Bovine: 100%; Guinea pig: 100%; Mouse: 93%; Rabbit: 86%  |



[View online »](#)

## Product images:



WB Suggested Anti-FUBP3 Antibody Titration: 0.2-1 ug/ml; ELISA Titer: 1: 62500; Positive Control: PANC1 cell lysate