

Product datasheet for **TA339919**

SSX2 Rabbit Polyclonal Antibody

Product data:

Product Type:	Primary Antibodies
Applications:	WB
Recommended Dilution:	WB
Reactivity:	Human
Host:	Rabbit
Isotype:	IgG
Clonality:	Polyclonal
Immunogen:	The immunogen for Anti-SSX2 antibody is: synthetic peptide directed towards the middle region of Human SSX2
Formulation:	Liquid. Purified antibody supplied in 1x PBS buffer with 0.09% (w/v) sodium azide and 2% sucrose. <i>Note that this product is shipped as lyophilized powder to China customers.</i>
Concentration:	lot specific
Purification:	Affinity Purified
Conjugation:	Unconjugated
Storage:	Store at -20°C as received.
Stability:	Stable for 12 months from date of receipt.
Predicted Protein Size:	24 kDa
Gene Name:	SSX family member 2
Database Link:	NP_783629 Entrez Gene 6757 Human Q16385



[View online »](#)

Background:

SSX2 belongs to the family of highly homologous synovial sarcoma X (SSX) breakpoint proteins. These proteins may function as transcriptional repressors. They are also capable of eliciting spontaneously humoral and cellular immune responses in cancer patients, and are potentially useful targets in cancer vaccine-based immunotherapy. SSX1, SSX2 and SSX4 genes have been involved in the t(X;18) translocation characteristically found in all synovial sarcomas. This translocation results in the fusion of the synovial sarcoma translocation gene on chromosome 18 to one of the SSX genes on chromosome X. The encoded hybrid proteins are probably responsible for transforming activity. Two transcript variants encoding distinct isoforms have been identified for this gene.

Synonyms:

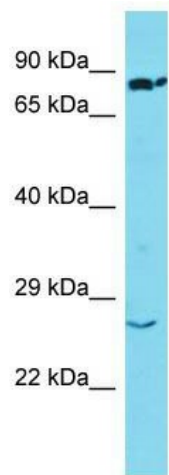
CT5.2; CT5.2A; HD21; HOM-MEL-40; SSX

Note:

Immunogen Sequence Homology: Human: 100%

Protein Families:

Druggable Genome, Transcription Factors

Product images:

Host: Rabbit; Target Name: SSX2; Sample Tissue: Lung Tumor lysates; Antibody Dilution: 1.0 ug/ml