

Product datasheet for **TA339912**

DEPDC7 Rabbit Polyclonal Antibody

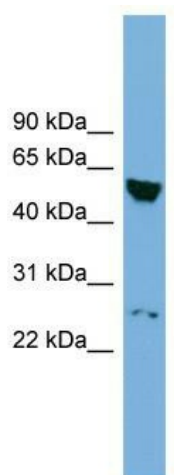
Product data:

Product Type:	Primary Antibodies
Applications:	WB
Recommended Dilution:	WB
Reactivity:	Human
Host:	Rabbit
Isotype:	IgG
Clonality:	Polyclonal
Immunogen:	The immunogen for anti-DEPDC7 antibody: synthetic peptide directed towards the N terminal of human DEPDC7.
Formulation:	Liquid. Purified antibody supplied in 1x PBS buffer with 0.09% (w/v) sodium azide and 2% sucrose. <i>Note that this product is shipped as lyophilized powder to China customers.</i>
Concentration:	lot specific
Purification:	Affinity Purified
Conjugation:	Unconjugated
Storage:	Store at -20°C as received.
Stability:	Stable for 12 months from date of receipt.
Predicted Protein Size:	58
Gene Name:	DEP domain containing 7
Database Link:	NP_631899 Entrez Gene 91614 Human Q96QD5
Background:	The exact function of DEPDC7 remains unknown.
Synonyms:	dJ85M6.4; TR2
Note:	Immunogen Sequence Homology: Dog: 100%; Rat: 100%; Human: 100%; Mouse: 100%; Pig: 92%; Horse: 92%; Bovine: 92%; Rabbit: 92%; Guinea pig: 91%



[View online »](#)

Product images:



WB Suggested Anti-DEPDC7 Antibody Titration:
0.2-1 ug/ml; ELISA Titer: 1: 1562500; Positive
Control: NCI-H226 cell lysate