

Product datasheet for **TA339910**

MFSD3 Rabbit Polyclonal Antibody

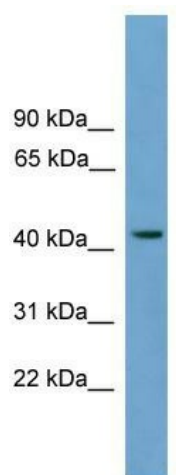
Product data:

Product Type:	Primary Antibodies
Applications:	WB
Recommended Dilution:	WB
Reactivity:	Human
Host:	Rabbit
Isotype:	IgG
Clonality:	Polyclonal
Immunogen:	The immunogen for anti-MFSD3 antibody: synthetic peptide directed towards the middle region of human MFSD3
Formulation:	Liquid. Purified antibody supplied in 1x PBS buffer with 0.09% (w/v) sodium azide and 2% sucrose.
Concentration:	lot specific
Purification:	Affinity Purified
Conjugation:	Unconjugated
Storage:	Store at -20°C as received.
Stability:	Stable for 12 months from date of receipt.
Predicted Protein Size:	43 kDa
Gene Name:	major facilitator superfamily domain containing 3
Database Link:	NP_612440 Entrez Gene 113655 Human Q96ES6
Background:	MFSD3 belongs to the major facilitator superfamily. The exact functions of MFSD3 remain unknown.
Synonyms:	major facilitator superfamily domain containing 3
Note:	Immunogen Sequence Homology: Human: 100%
Protein Families:	Transmembrane



[View online »](#)

Product images:



WB Suggested Anti-MFSD3 Antibody Titration:
0.2-1 ug/ml; Positive Control: MCF7 cell lysate