

## Product datasheet for **TA339907**

### ZNF681 Rabbit Polyclonal Antibody

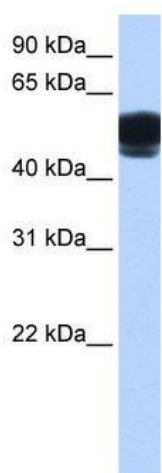
#### Product data:

Product Type:	Primary Antibodies
Applications:	WB
Recommended Dilution:	WB
Reactivity:	Human
Host:	Rabbit
Isotype:	IgG
Clonality:	Polyclonal
Immunogen:	The immunogen for anti-ZNF681 antibody: synthetic peptide directed towards the C-terminal of human ZNF681.
Formulation:	Liquid. Purified antibody supplied in 1x PBS buffer with 0.09% (w/v) sodium azide and 2% sucrose. <i>Note that this product is shipped as lyophilized powder to China customers.</i>
Concentration:	lot specific
Purification:	Affinity Purified
Conjugation:	Unconjugated
Storage:	Store at -20°C as received.
Stability:	Stable for 12 months from date of receipt.
Predicted Protein Size:	62 kDa
Gene Name:	zinc finger protein 681
Database Link:	<a href="#">NP_612143</a> <a href="#">Entrez Gene 148213 Human</a> <a href="#">Q96N22</a>
Background:	ZNF681 belongs to the krueppel C2H2-type zinc-finger protein family. It Contains 16 C2H2-type zinc fingers. ZNF681 may be involved in transcriptional regulation.
Synonyms:	FLJ31526
Note:	Immunogen Sequence Homology: Human: 100%



[View online »](#)

## Product images:



WB Suggested Anti-ZNF681 Antibody Titration:  
0.2-1 ug/ml; Positive Control: Human brain