

## Product datasheet for **TA339902**

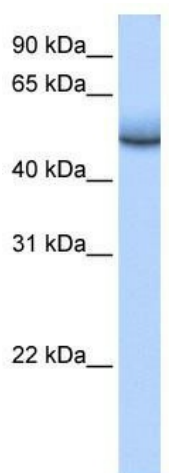
### ZNF486 Rabbit Polyclonal Antibody

#### Product data:

Product Type:	Primary Antibodies
Applications:	WB
Recommended Dilution:	WB
Reactivity:	Human
Host:	Rabbit
Isotype:	IgG
Clonality:	Polyclonal
Immunogen:	The immunogen for anti-ZNF486 antibody: synthetic peptide directed towards the middle region of human ZNF486
Formulation:	Liquid. Purified antibody supplied in 1x PBS buffer with 0.09% (w/v) sodium azide and 2% sucrose.
Concentration:	lot specific
Purification:	Affinity Purified
Conjugation:	Unconjugated
Storage:	Store at -20°C as received.
Stability:	Stable for 12 months from date of receipt.
Predicted Protein Size:	54 kDa
Gene Name:	zinc finger protein 486
Database Link:	<a href="#">NP_443084</a> <a href="#">Entrez Gene 90649 Human</a> <a href="#">Q96H40</a>
Background:	ZNF486 belongs to the krueppel C2H2-type zinc-finger protein family. It contains 2 C2H2-type zinc fingers and 1 KRAB domain. ZNF486 may be involved in transcriptional regulation.
Synonyms:	KRBO2
Note:	Immunogen Sequence Homology: Rat: 100%; Human: 100%; Mouse: 100%; Zebrafish: 93%; Dog: 92%; Pig: 92%; Horse: 92%; Bovine: 92%; Rabbit: 92%



[View online »](#)

**Product images:**

WB Suggested Anti-ZNF486 Antibody Titration:  
0.2-1 ug/ml; Positive Control: Human brain