

## Product datasheet for **TA339899**

### MICALL1 Rabbit Polyclonal Antibody

#### Product data:

Product Type:	Primary Antibodies
Applications:	IHC, WB
Recommended Dilution:	WB, IHC
Reactivity:	Human
Host:	Rabbit
Isotype:	IgG
Clonality:	Polyclonal
Immunogen:	The immunogen for anti-MICALL1 antibody: synthetic peptide directed towards the N terminal of human MICALL1. Synthetic peptide located within the following region
Formulation:	Liquid. Purified antibody supplied in 1x PBS buffer with 0.09% (w/v) sodium azide and 2% sucrose. <i>Note that this product is shipped as lyophilized powder to China customers.</i>
Concentration:	lot specific
Purification:	Affinity Purified
Conjugation:	Unconjugated
Storage:	Store at -20°C as received.
Stability:	Stable for 12 months from date of receipt.
Predicted Protein Size:	93 kDa
Gene Name:	MICAL like 1
Database Link:	<a href="#">NP_203744</a> <a href="#">Entrez Gene 85377 Human</a> <a href="#">Q8N3F8</a>
Background:	MICALL1 contains 1 CH (calponin-homology) domain and 1 LIM zinc-binding domain. It may be a cytoskeletal regulator.
Synonyms:	MICAL-L1; MIRAB13
Note:	Immunogen Sequence Homology: Human: 100%; Goat: 82%



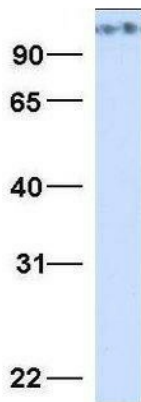
[View online »](#)

Product images:



WB Suggested Anti-MICALL1 Antibody Titration: 0.2-1 ug/ml; Positive Control: Human Liver

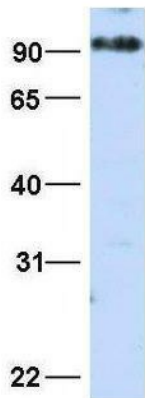
**MICALL1**



Rabbit Anti-MICALL1  
 Sample Type: Human 293T  
 Antibody Concentration: 1ug/mL

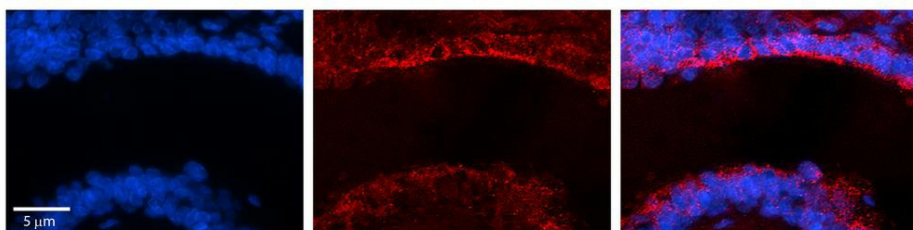
Host: Rabbit; Target Name: MICALL1; Sample Tissue: 293T; Antibody Dilution: 1.0 ug/ml  
 MICALL1 is supported by BioGPS gene expression data to be expressed in HEK293T

# MICALL1



Rabbit Anti-MICALL1  
 Sample Type: Human HepG2  
 Antibody Concentration: 1ug/mL

Host: Rabbit; Target Name: MICALL1; Sample Tissue: HepG2; Antibody Dilution: 1.0 ug/ml  
 MICALL1 is supported by BioGPS gene expression data to be expressed in HepG2



Rabbit Anti-MICALL1 Antibody; Formalin Fixed Paraffin Embedded Tissue: Human Bronchial Epithelial Tissue; Observed Staining: Cytoplasmic; Primary Antibody Concentration: 1: 100; Secondary Antibody: Donkey anti-Rabbit-Cy3; Secondary Antibody Concentration: