

Product datasheet for TA339898

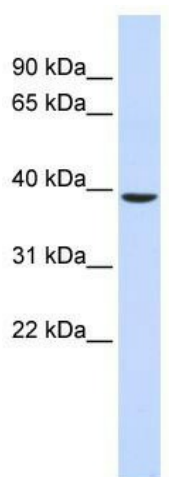
C2orf60 (TYW5) Rabbit Polyclonal Antibody

Product data:

| | |
|-------------------------|--|
| Product Type: | Primary Antibodies |
| Applications: | WB |
| Recommended Dilution: | WB |
| Reactivity: | Human |
| Host: | Rabbit |
| Isotype: | IgG |
| Clonality: | Polyclonal |
| Immunogen: | The immunogen for anti-C2orf60 antibody: synthetic peptide directed towards the middle region of human C2orf60. NKDPTAASRAAQILDRALKTLAELPEEYRDFYARRMVLHIQDKAYSKNSE |
| Formulation: | Liquid. Purified antibody supplied in 1x PBS buffer with 0.09% (w/v) sodium azide and 2% sucrose. |
| Concentration: | lot specific |
| Purification: | Affinity Purified |
| Conjugation: | Unconjugated |
| Storage: | Store at -20°C as received. |
| Stability: | Stable for 12 months from date of receipt. |
| Predicted Protein Size: | 36 kDa |
| Gene Name: | tRNA-yW synthesizing protein 5 |
| Database Link: | NP_001034782 Entrez Gene 129450 Human A2RUC4 |
| Background: | The function of the C2orf60 protein remains unknown. |
| Synonyms: | C2orf60; hTYW5 |
| Note: | Immunogen Sequence Homology: Dog: 100%; Human: 100%; Pig: 93%; Rat: 93%; Horse: 93%; Bovine: 93%; Rabbit: 93%; Mouse: 86%; Guinea pig: 86% |


[View online »](#)

Product images:



WB Suggested Anti-TYW5 Antibody Titration: 0.2-1 ug/ml; ELISA Titer: 1: 62500; Positive Control: Human Muscle