

## Product datasheet for **TA339895**

### C3orf10 (BRK1) Rabbit Polyclonal Antibody

#### Product data:

Product Type:	Primary Antibodies
Applications:	IHC, WB
Recommended Dilution:	WB, IHC
Reactivity:	Human
Host:	Rabbit
Isotype:	IgG
Clonality:	Polyclonal
Immunogen:	The immunogen for anti-C3orf10 antibody: synthetic peptide directed towards the middle region of human C3orf10. Synthetic peptide located within the following region: YIEIITSSIKKIADFLNSFDMSCRSRLATLNEKLTALERRIEYIEARVTK
Formulation:	Liquid. Purified antibody supplied in 1x PBS buffer with 0.09% (w/v) sodium azide and 2% sucrose. <i>Note that this product is shipped as lyophilized powder to China customers.</i>
Concentration:	lot specific
Purification:	Protein A purified
Conjugation:	Unconjugated
Storage:	Store at -20°C as received.
Stability:	Stable for 12 months from date of receipt.
Predicted Protein Size:	9 kDa
Gene Name:	BRICK1, SCAR/WAVE actin nucleating complex subunit
Database Link:	<a href="#">NP_060932</a> <a href="#">Entrez Gene 55845 Human</a> <a href="#">Q8WUW1</a>
Background:	C3orf10 is involved in regulation of actin and microtubule organization. It is a part of a WAVE complex that activates the Arp2/3 complex.
Synonyms:	C3orf10; hHBrk1; HSPC300; MDS027



[View online »](#)

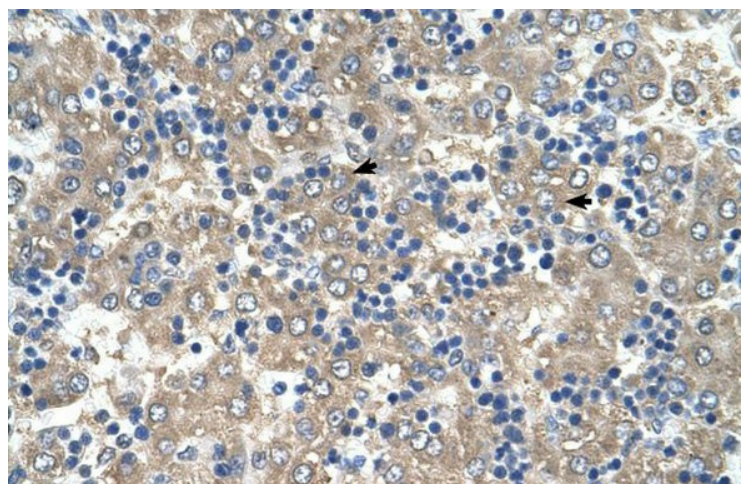
**Note:** Immunogen Sequence Homology: Dog: 100%; Pig: 100%; Rat: 100%; Horse: 100%; Human: 100%; Mouse: 100%; Bovine: 100%; Zebrafish: 100%

**Protein Pathways:** Regulation of actin cytoskeleton

**Product images:**



WB Suggested Antibody Titration: 2.5 ug/ml;  
Positive Control: HepG2



Human Liver