

Product datasheet for **TA339894**

HEF1 (NEDD9) Rabbit Polyclonal Antibody

Product data:

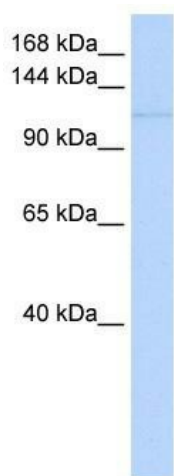
Product Type:	Primary Antibodies
Applications:	WB
Recommended Dilution:	WB
Reactivity:	Human
Host:	Rabbit
Isotype:	IgG
Clonality:	Polyclonal
Immunogen:	The immunogen for anti-NEDD9 antibody: synthetic peptide directed towards the middle region of human NEDD9. Synthetic peptide located within the following region: DLVDGINRLSFSSTGSTRSNMSTSSTSSKESLSASPAQDKRFLDPDTA
Formulation:	Liquid. Purified antibody supplied in 1x PBS buffer with 0.09% (w/v) sodium azide and 2% sucrose. <i>Note that this product is shipped as lyophilized powder to China customers.</i>
Concentration:	lot specific
Purification:	Affinity Purified
Conjugation:	Unconjugated
Storage:	Store at -20°C as received.
Stability:	Stable for 12 months from date of receipt.
Predicted Protein Size:	93 kDa
Gene Name:	neural precursor cell expressed, developmentally down-regulated 9
Database Link:	NP_006394 Entrez Gene 4739 Human Q14511
Background:	Variation in NEDD9 is associated with susceptibility to late-onset Alzheimer and Parkinson diseases. Changes in expression of the scaffold protein HEF1/CAS-L/NEDD9 were found to be a potent prometastatic stimulus in melanoma and other cancers.
Synonyms:	CAS-L; CAS2; CASL; CASS2; HEF1



[View online »](#)

Note: Immunogen Sequence Homology: Pig: 100%; Rat: 100%; Human: 100%; Mouse: 100%; Rabbit: 100%; Guinea pig: 100%; Dog: 93%; Horse: 93%; Bovine: 86%

Product images:



WB Suggested Anti-NEDD9 Antibody Titration:
0.2-1 ug/ml; ELISA Titer: 1: 12500; Positive
Control: 293T cell lysate