

Product datasheet for **TA339893**

HEF1 (NEDD9) Rabbit Polyclonal Antibody

Product data:

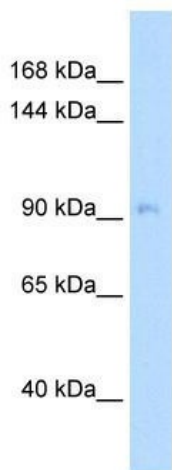
Product Type:	Primary Antibodies
Applications:	IHC, WB
Recommended Dilution:	WB, IHC
Reactivity:	Human
Host:	Rabbit
Isotype:	IgG
Clonality:	Polyclonal
Immunogen:	The immunogen for anti-NEDD9 antibody: synthetic peptide directed towards the middle region of human NEDD9. Synthetic peptide located within the following region: HPPPQLGQSVGSQNDAYDVPRGVQFLEPPAETSEKANPQERDGVYDVPLH
Formulation:	Liquid. Purified antibody supplied in 1x PBS buffer with 0.09% (w/v) sodium azide and 2% sucrose. <i>Note that this product is shipped as lyophilized powder to China customers.</i>
Concentration:	lot specific
Purification:	Protein A purified
Conjugation:	Unconjugated
Storage:	Store at -20°C as received.
Stability:	Stable for 12 months from date of receipt.
Predicted Protein Size:	93 kDa
Gene Name:	neural precursor cell expressed, developmentally down-regulated 9
Database Link:	NP_006394 Entrez Gene 4739 Human Q14511
Background:	Variation in NEDD9 is associated with susceptibility to late-onset Alzheimer and Parkinson diseases. Changes in expression of the scaffold protein HEF1/CAS-L/NEDD9 were found to be a potent prometastatic stimulus in melanoma and other cancers.
Synonyms:	CAS-L; CAS2; CASL; CASS2; HEF1



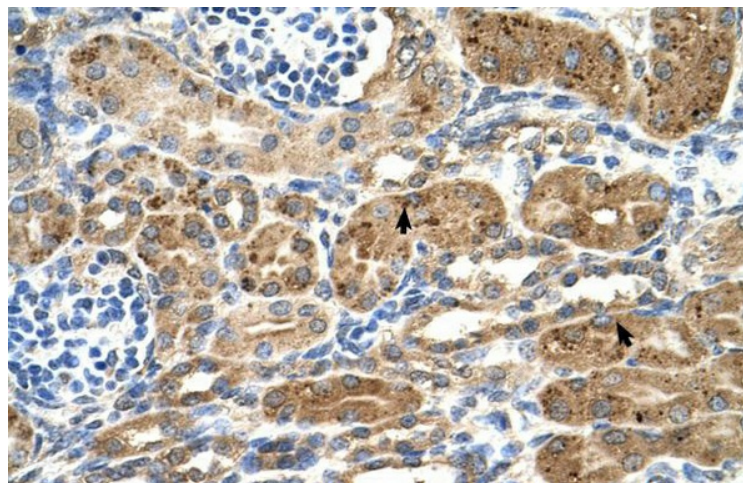
[View online »](#)

Note: Immunogen Sequence Homology: Human: 100%; Dog: 93%; Horse: 93%; Mouse: 92%; Bovine: 86%; Pig: 79%; Rat: 79%; Rabbit: 79%; Guinea pig: 79%

Product images:



WB Suggested Anti-NEDD9 Antibody Titration: 5.0 ug/ml; Positive Control: 721_B cell lysate NEDD9 is strongly supported by BioGPS gene expression data to be expressed in Human 721_B cells



Human kidney