

Product datasheet for **TA339892**

TEC Rabbit Polyclonal Antibody

Product data:

Product Type:	Primary Antibodies
Applications:	WB
Recommended Dilution:	WB
Reactivity:	Human
Host:	Rabbit
Isotype:	IgG
Clonality:	Polyclonal
Immunogen:	The immunogen for anti-TEC antibody: synthetic peptide directed towards the middle region of human TEC. Synthetic peptide located within the following region: VKVSDFGMARYVLDDQYTSSSGAKFPVKWCPPEVFNYSRFSSKSDVWSFG
Formulation:	Liquid. Purified antibody supplied in 1x PBS buffer with 0.09% (w/v) sodium azide and 2% sucrose. <i>Note that this product is shipped as lyophilized powder to China customers.</i>
Concentration:	lot specific
Purification:	Affinity Purified
Conjugation:	Unconjugated
Storage:	Store at -20°C as received.
Stability:	Stable for 12 months from date of receipt.
Predicted Protein Size:	73 kDa
Gene Name:	tec protein tyrosine kinase
Database Link:	NP_003206 Entrez Gene 7006 Human P42680



[View online »](#)

Background:

The protein encoded by this gene belongs to the Tec family of non-receptor protein-tyrosine kinases containing a pleckstrin homology domain. Tec family kinases are involved in the intracellular signaling mechanisms of cytokine receptors, lymphocyte surface antigens, heterotrimeric G-protein coupled receptors, and integrin molecules. They are also key players in the regulation of the immune functions. Tec kinase is an integral component of T cell signaling and has a distinct role in T cell activation. This gene may be associated with myelodysplastic syndrome.

Synonyms:

PSCTK4

Note:

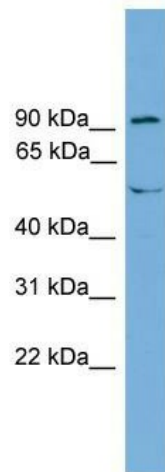
Immunogen Sequence Homology: Dog: 100%; Pig: 100%; Rat: 100%; Horse: 100%; Human: 100%; Mouse: 100%; Bovine: 100%; Rabbit: 100%; Guinea pig: 100%; Zebrafish: 85%

Protein Families:

Druggable Genome, Protein Kinase

Protein Pathways:

T cell receptor signaling pathway

Product images:

WB Suggested Anti-TEC Antibody Titration: 0.2-1 ug/ml; Positive Control: THP-1 cell lysate