

Product datasheet for **TA339891**

H6PD Rabbit Polyclonal Antibody

Product data:

Product Type:	Primary Antibodies
Applications:	IHC, WB
Recommended Dilution:	WB, IHC
Reactivity:	Human
Host:	Rabbit
Isotype:	IgG
Clonality:	Polyclonal
Immunogen:	The immunogen for anti-H6PD antibody: synthetic peptide directed towards the N terminal of human H6PD. Synthetic peptide located within the following region: HFSAQQLATELGTFQEEEMYRVDHYLGKQAVAQILPFRDQNRKALDGLW
Formulation:	Liquid. Purified antibody supplied in 1x PBS buffer with 0.09% (w/v) sodium azide and 2% sucrose. <i>Note that this product is shipped as lyophilized powder to China customers.</i>
Concentration:	lot specific
Purification:	Affinity Purified
Conjugation:	Unconjugated
Storage:	Store at -20°C as received.
Stability:	Stable for 12 months from date of receipt.
Predicted Protein Size:	89 kDa
Gene Name:	hexose-6-phosphate dehydrogenase/glucose 1-dehydrogenase
Database Link:	NP_004276 Entrez Gene 9563 Human O95479



[View online »](#)

Background:

There are 2 forms of glucose-6-phosphate dehydrogenase. G form is X-linked and H form is autosomally linked. This H form shows activity with other hexose-6-phosphates, especially galactose-6-phosphate, whereas the G form is specific for glucose-6-phosphate. Both forms are present in most tissues, but H form is not found in red cells. There are 2 forms of glucose-6-phosphate dehydrogenase. G form is X-linked and H form, encoded by this gene, is autosomally linked. This H form shows activity with other hexose-6-phosphates, especially galactose-6-phosphate, whereas the G form is specific for glucose-6-phosphate. Both forms are present in most tissues, but H form is not found in red cells. Publication Note: This RefSeq record includes a subset of the publications that are available for this gene. Please see the Entrez Gene record to access additional publications.

Synonyms:

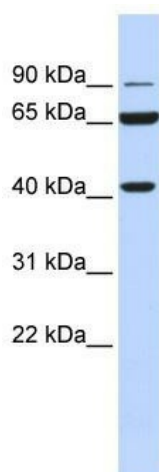
CORTRD1; G6PDH; GDH

Note:

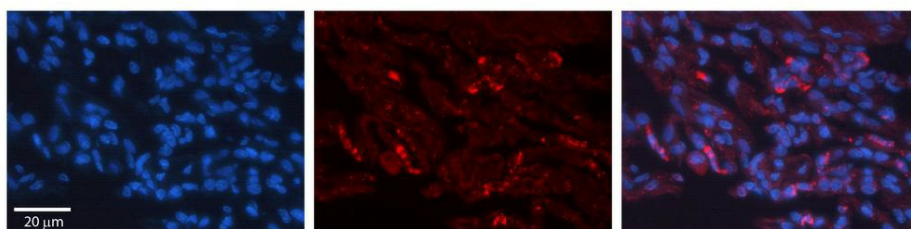
Immunogen Sequence Homology: Dog: 100%; Pig: 100%; Rat: 100%; Human: 100%; Mouse: 100%; Guinea pig: 100%; Horse: 93%; Bovine: 93%; Rabbit: 86%

Protein Pathways:

Metabolic pathways, Pentose phosphate pathway

Product images:

WB Suggested Anti-H6PD Antibody Titration: 0.2-1 ug/ml; ELISA Titer: 1: 312500; Positive Control: 721_B cell lysate H6PD is supported by BioGPS gene expression data to be expressed in 721_B



Rabbit Anti-H6PD Antibody; Formalin Fixed Paraffin Embedded Tissue: Human Lung Tissue; Observed Staining: Cytoplasmic in alveolar type I cells; Primary Antibody Concentration: 1: 100; Other Working Concentrations: 1/600; Secondary Antibody: Donkey anti-Ra