

Product datasheet for TA339890

OLFM4 Rabbit Polyclonal Antibody

Product data:

Product Type:	Primary Antibodies
Applications:	WB
Recommended Dilution:	WB
Reactivity:	Human
Host:	Rabbit
Isotype:	IgG
Clonality:	Polyclonal
Immunogen:	The immunogen for anti-OLFM4 antibody: synthetic peptide directed towards the C terminal of human OLFM4. Synthetic peptide located within the following region: EEIFYYYDTNTGKEGKLDIVMHKMQEKVQSINYNPFDQKLYVYNDGYLLN
Formulation:	Liquid. Purified antibody supplied in 1x PBS buffer with 0.09% (w/v) sodium azide and 2% sucrose. <i>Note that this product is shipped as lyophilized powder to China customers.</i>
Concentration:	lot specific
Purification:	Protein A purified
Conjugation:	Unconjugated
Storage:	Store at -20°C as received.
Stability:	Stable for 12 months from date of receipt.
Predicted Protein Size:	55 kDa
Gene Name:	olfactomedin 4
Database Link:	NP_006409 Entrez Gene 10562 Human Q6UX06
Background:	OLFM4 is a member of the olfactomedin-related protein family. The exact function of its gene has not yet been determined. This gene was originally cloned from human myeloblasts and found to be selectively expressed in inflamed colonic epithelium. The protein encoded is a member of the olfactomedin-related protein family. The exact function of this gene has not yet been determined.



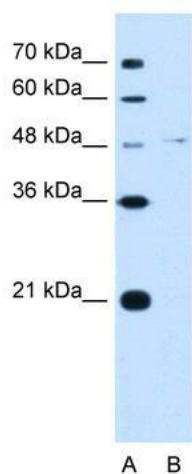
[View online »](#)

Synonyms: bA209J19.1; GC1; GW112; hGC-1; hOLFd; OlfD; OLM4; UNQ362

Note: Immunogen Sequence Homology: Human: 100%; Pig: 86%; Rat: 86%; Horse: 86%; Bovine: 86%; Guinea pig: 86%; Dog: 79%; Rabbit: 79%

Protein Families: Druggable Genome

Product images:



WB Suggested Anti-OLFM4 Antibody Titration: 5.0 ug/ml; Positive Control: Jurkat cell lysate