

Product datasheet for **TA339889**

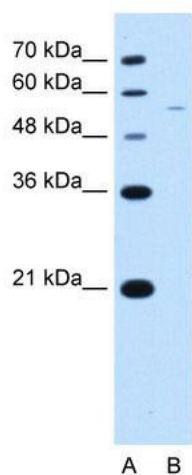
RSRC2 Rabbit Polyclonal Antibody

Product data:

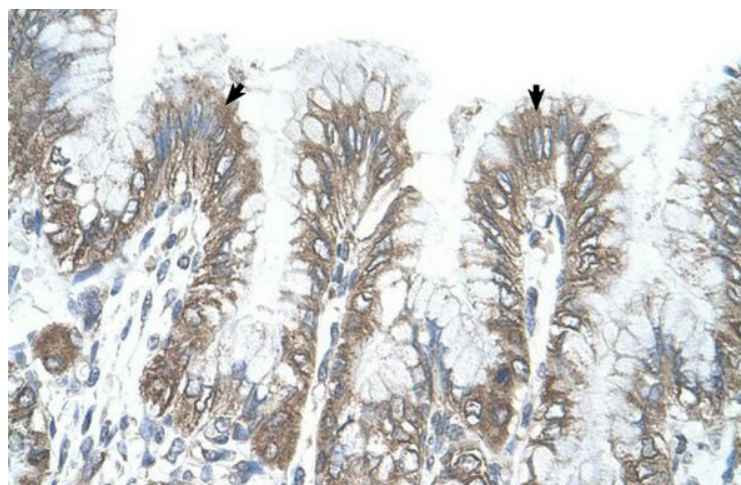
Product Type:	Primary Antibodies
Applications:	IHC, WB
Recommended Dilution:	WB, IHC
Reactivity:	Human
Host:	Rabbit
Isotype:	IgG
Clonality:	Polyclonal
Immunogen:	The immunogen for anti-RSRC2 antibody: synthetic peptide directed towards the C terminal of human RSRC2. Synthetic peptide located within the following region: DQNVKFRKLMGIKSEDEAGCSSVDEESYKTLKQEEVFRNLDAQYEMARS
Formulation:	Liquid. Purified antibody supplied in 1x PBS buffer with 0.09% (w/v) sodium azide and 2% sucrose.
Concentration:	lot specific
Purification:	Protein A purified
Conjugation:	Unconjugated
Storage:	Store at -20°C as received.
Stability:	Stable for 12 months from date of receipt.
Predicted Protein Size:	50 kDa
Gene Name:	arginine/serine-rich coiled-coil 2
Database Link:	NP_075388 Entrez Gene 65117 Human Q7L4I2
Background:	In vitro study revealed that RSRC2 might play a role in cell proliferation. RSRC2 may be a novel tumor suppressor of esophageal cancer cell growth.
Synonyms:	FLJ11021
Note:	Immunogen Sequence Homology: Dog: 100%; Pig: 100%; Rat: 100%; Horse: 100%; Human: 100%; Mouse: 100%; Bovine: 100%; Rabbit: 100%; Guinea pig: 100%


[View online »](#)

Product images:



WB Suggested Antibody Titration: 2.5 ug/ml;
Positive Control: Jurkat RSRC2 is strongly supported by BioGPS gene expression data to be expressed in Human Jurkat cells



Human Stomach