

Product datasheet for **TA339888**

MAS1 Rabbit Polyclonal Antibody

Product data:

Product Type:	Primary Antibodies
Applications:	IHC, WB
Recommended Dilution:	WB, IHC
Reactivity:	Human
Host:	Rabbit
Isotype:	IgG
Clonality:	Polyclonal
Immunogen:	The immunogen for anti-MAS1 antibody: synthetic peptide directed towards the middle region of human MAS1. Synthetic peptide located within the following region: VIIFIALSFLVFTPLMLVSSTILVVKIRKNTWASHSSKLYIVIMVTIII
Formulation:	Liquid. Purified antibody supplied in 1x PBS buffer with 0.09% (w/v) sodium azide and 2% sucrose. <i>Note that this product is shipped as lyophilized powder to China customers.</i>
Concentration:	lot specific
Purification:	Affinity Purified
Conjugation:	Unconjugated
Storage:	Store at -20°C as received.
Stability:	Stable for 12 months from date of receipt.
Predicted Protein Size:	37 kDa
Gene Name:	MAS1 proto-oncogene, G protein-coupled receptor
Database Link:	NP_002368 Entrez Gene 4142 Human P04201



[View online »](#)

Background:

The structure of MAS1 indicates that it belongs to the class of receptors that are coupled to GTP-binding proteins and share a conserved structural motif, which is described as a '7-transmembrane segment' following the prediction that these hydrophobic segments form membrane-spanning alpha-helices. The MAS1 protein may be a receptor that, when activated, modulates a critical component in a growth-regulating pathway to bring about oncogenic effects. The structure of the MAS1 product indicates that it belongs to the class of receptors that are coupled to GTP-binding proteins and share a conserved structural motif, which is described as a '7-transmembrane segment' following the prediction that these hydrophobic segments form membrane-spanning alpha-helices. The MAS1 protein may be a receptor that, when activated, modulates a critical component in a growth-regulating pathway to bring about oncogenic effects. The structure of the MAS1 product indicates that it belongs to the class of receptors that are coupled to GTP-binding proteins and share a conserved structural motif, which is described as a '7-transmembrane segment' following the prediction that these hydrophobic segments form membrane-spanning alpha-helices. The MAS1 protein may be a receptor that, when activated, modulates a critical component in a growth-regulating pathway to bring about oncogenic effects.

Synonyms:

MAS; MGRA

Note:

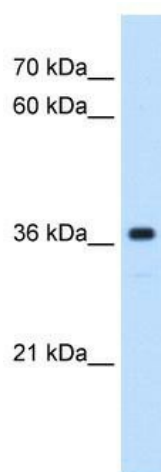
Immunogen Sequence Homology: Rat: 100%; Human: 100%; Mouse: 100%; Bovine: 93%; Dog: 86%; Pig: 86%; Guinea pig: 86%

Protein Families:

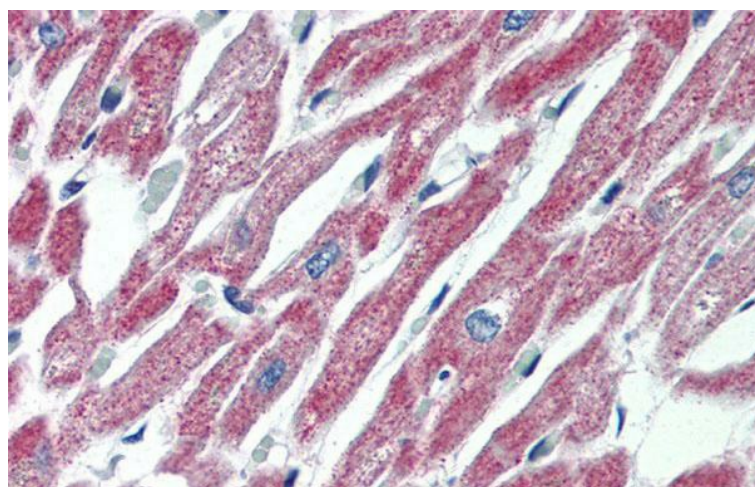
Druggable Genome, GPCR, Transmembrane

Protein Pathways:

Neuroactive ligand-receptor interaction, Renin-angiotensin system

Product images:


WB Suggested Anti-MAS1 Antibody Titration: 0.25 ug/ml; Positive Control: HepG2 cell lysate



Immunohistochemistry with Human Heart lysate tissue at an antibody concentration of 5.0 ug/ml using anti-MAS1 antibody