

Product datasheet for **TA339886**

MAS1 Rabbit Polyclonal Antibody

Product data:

Product Type:	Primary Antibodies
Applications:	WB
Recommended Dilution:	WB
Reactivity:	Human
Host:	Rabbit
Isotype:	IgG
Clonality:	Polyclonal
Immunogen:	The immunogen for Anti-MAS1 antibody is: synthetic peptide directed towards the N-terminal region of Human MAS1. Synthetic peptide located within the following region: VTSFVVEPTNISTGRNASVGNHRQIPIVHWWIMSISPVGFEVNGILLW
Formulation:	Liquid. Purified antibody supplied in 1x PBS buffer with 0.09% (w/v) sodium azide and 2% sucrose. <i>Note that this product is shipped as lyophilized powder to China customers.</i>
Concentration:	lot specific
Purification:	Affinity Purified
Conjugation:	Unconjugated
Storage:	Store at -20°C as received.
Stability:	Stable for 12 months from date of receipt.
Predicted Protein Size:	35 kDa
Gene Name:	MAS1 proto-oncogene, G protein-coupled receptor
Database Link:	NP_002368 Entrez Gene 4142 Human P04201



[View online »](#)

Background: The structure of MAS1 indicates that it belongs to the class of receptors that are coupled to GTP-binding proteins and share a conserved structural motif, which is described as a '7-transmembrane segment' following the prediction that these hydrophobic segments form membrane-spanning alpha-helices. The MAS1 protein may be a receptor that, when activated, modulates a critical component in a growth-regulating pathway to bring about oncogenic effects.

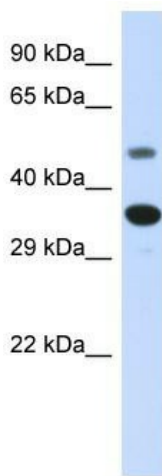
Synonyms: MAS; MGRA

Note: Immunogen Sequence Homology: Human: 100%

Protein Families: Druggable Genome, GPCR, Transmembrane

Protein Pathways: Neuroactive ligand-receptor interaction, Renin-angiotensin system

Product images:



Host: Rabbit
Target Name: MAS1
Sample Tissue: Fetal Liver Lysate
Antibody Dilution: 1.0 µg/ml

Host: Rabbit; Target Name: MAS1; Sample Tissue: Fetal Liver lysates; Antibody Dilution: 1.0 ug/ml