

Product datasheet for **TA339884**

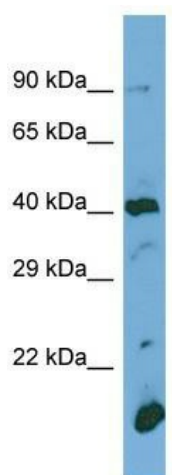
KTEL1 (POGLUT1) Rabbit Polyclonal Antibody

Product data:

Product Type:	Primary Antibodies
Applications:	WB
Recommended Dilution:	WB
Reactivity:	Human
Host:	Rabbit
Isotype:	IgG
Clonality:	Polyclonal
Immunogen:	The immunogen for Anti-POGLUT1 antibody is: synthetic peptide directed towards the N-terminal region of Human POGLUT1. Synthetic peptide located within the following region: FLLPSAQGRQKESGSKWKVFIDQINRSLENYEPCSSQNCSCYHGVI EEDL
Formulation:	Liquid. Purified antibody supplied in 1x PBS buffer with 0.09% (w/v) sodium azide and 2% sucrose.
Concentration:	lot specific
Purification:	Affinity Purified
Conjugation:	Unconjugated
Storage:	Store at -20°C as received.
Stability:	Stable for 12 months from date of receipt.
Predicted Protein Size:	46 kDa
Gene Name:	protein O-glycosyltransferase 1
Database Link:	NP_689518 Entrez Gene 56983 Human Q8NBL1
Background:	POGLUT1 is a UDP-glycosyltransferase.
Synonyms:	C3orf9; CLP46; hCLP46; KDELCL1; KTELC1; MDS010; MDSRP; Rumi
Note:	Immunogen Sequence Homology: Rat: 100%; Human: 100%; Horse: 79%; Rabbit: 79%



[View online »](#)

Product images:

Host: Rabbit; Target Name: POGLUT1; Sample Tissue: Jurkat Whole Cell lysates; Antibody Dilution: 1.0 ug/ml. POGLUT1 is supported by BioGPS gene expression data to be expressed in Jurkat