

## Product datasheet for **TA339883**

### LCN6 Rabbit Polyclonal Antibody

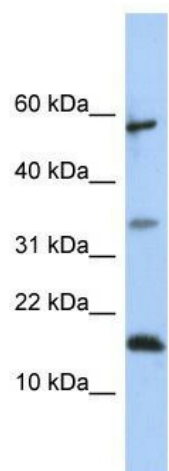
#### Product data:

Product Type:	Primary Antibodies
Applications:	WB
Recommended Dilution:	WB
Reactivity:	Human
Host:	Rabbit
Isotype:	IgG
Clonality:	Polyclonal
Immunogen:	The immunogen for anti-LCN6 antibody: synthetic peptide directed towards the middle region of human LCN6. Synthetic peptide located within the following region: LWVLATNFRDYAIIFTQLEFGDEPFNTVELYSLTETASQEAMGLFTKWSR
Formulation:	Liquid. Purified antibody supplied in 1x PBS buffer with 0.09% (w/v) sodium azide and 2% sucrose.
Concentration:	lot specific
Purification:	Affinity Purified
Conjugation:	Unconjugated
Storage:	Store at -20°C as received.
Stability:	Stable for 12 months from date of receipt.
Predicted Protein Size:	18 kDa
Gene Name:	lipocalin 6
Database Link:	<a href="#">NP_945184</a> <a href="#">Entrez Gene 158062 Human</a> <a href="#">P62502</a>
Background:	LCN6 may play a role in male fertility.
Synonyms:	hLcn5; LCN5; UNQ643
Note:	Immunogen Sequence Homology: Human: 100%; Dog: 86%
Protein Families:	Secreted Protein



[View online »](#)

## Product images:



WB Suggested Anti-LCN6 Antibody Titration: 0.2-1 ug/ml; ELISA Titer: 1: 12500; Positive Control: 721\_B cell lysate