

Product datasheet for **TA339880**

PRR11 Rabbit Polyclonal Antibody

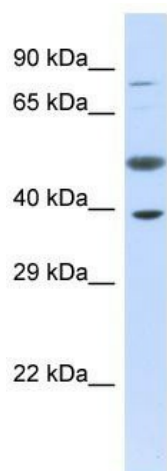
Product data:

Product Type:	Primary Antibodies
Applications:	WB
Recommended Dilution:	WB
Reactivity:	Human
Host:	Rabbit
Isotype:	IgG
Clonality:	Polyclonal
Immunogen:	The immunogen for Anti-PRR11 antibody is: synthetic peptide directed towards the C-terminal region of Human PRR11. Synthetic peptide located within the following region: TPLTNKENMETGTGLTPVMTQALRRKFQLAHPRSPTPLPLSTSSFDEQN
Formulation:	Liquid. Purified antibody supplied in 1x PBS buffer with 0.09% (w/v) sodium azide and 2% sucrose. <i>Note that this product is shipped as lyophilized powder to China customers.</i>
Concentration:	lot specific
Purification:	Affinity Purified
Conjugation:	Unconjugated
Storage:	Store at -20°C as received.
Stability:	Stable for 12 months from date of receipt.
Predicted Protein Size:	39 kDa
Gene Name:	proline rich 11
Database Link:	NP_060774 Entrez Gene 55771 Human Q96HE9
Background:	The function of this protein remains unknown.
Synonyms:	FLJ11029
Note:	Immunogen Sequence Homology: Dog: 100%; Rat: 100%; Horse: 100%; Human: 100%; Pig: 92%; Bovine: 92%; Guinea pig: 92%; Mouse: 88%



[View online »](#)

Product images:



Host: Rabbit
Target Name: PRR11
Sample Tissue: Fetal Liver Lysate
Antibody Dilution: 1.0 μ g/ml

Host: Rabbit; Target Name: PRR11; Sample
Tissue: Fetal Liver lysates; Antibody Dilution: 1.0
ug/ml