

## Product datasheet for **TA339879**

### PRR11 Rabbit Polyclonal Antibody

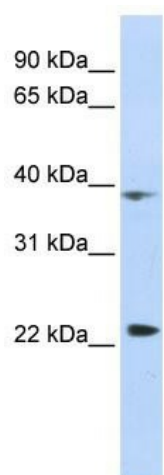
#### Product data:

Product Type:	Primary Antibodies
Applications:	WB
Recommended Dilution:	WB
Reactivity:	Human
Host:	Rabbit
Isotype:	IgG
Clonality:	Polyclonal
Immunogen:	The immunogen for anti-PRR11 antibody: synthetic peptide directed towards the middle region of human PRR11. Synthetic peptide located within the following region: PGKSQMDLRKLLRKVDVERSPGGTPLTNKENMETGTGLTPVMTQALRRKF
Formulation:	Liquid. Purified antibody supplied in 1x PBS buffer with 0.09% (w/v) sodium azide and 2% sucrose. <i>Note that this product is shipped as lyophilized powder to China customers.</i>
Concentration:	lot specific
Purification:	Affinity Purified
Conjugation:	Unconjugated
Storage:	Store at -20°C as received.
Stability:	Stable for 12 months from date of receipt.
Predicted Protein Size:	40 kDa
Gene Name:	proline rich 11
Database Link:	<a href="#">NP_060774</a> <a href="#">Entrez Gene 55771 Human</a> <a href="#">Q96HE9</a>
Background:	The function of the PRR11 protein remains unknown.
Synonyms:	FLJ11029
Note:	Immunogen Sequence Homology: Dog: 100%; Pig: 100%; Horse: 100%; Human: 100%; Bovine: 100%; Rabbit: 100%; Rat: 93%; Mouse: 93%; Guinea pig: 86%



[View online »](#)

## Product images:



WB Suggested Anti-PRR11 Antibody Titration: 0.2-1 ug/ml; ELISA Titer: 1: 312500; Positive Control: HepG2 cell lysate