

## Product datasheet for **TA339877**

### Ppil3 Rabbit Polyclonal Antibody

#### Product data:

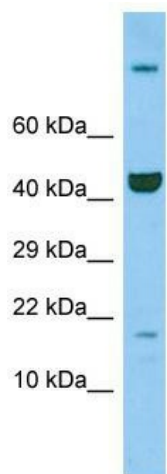
Product Type:	Primary Antibodies
Applications:	WB
Recommended Dilution:	WB
Reactivity:	Rat
Host:	Rabbit
Isotype:	IgG
Clonality:	Polyclonal
Immunogen:	The immunogen for Anti-Ppil3 antibody is: synthetic peptide directed towards the C-terminal region of Rat Ppil3. Synthetic peptide located within the following region: HLDMKYTVFGKVIDGLETLDELEKLPVNEKTYRPLNDVHIKDITIHANPF
Formulation:	Liquid. Purified antibody supplied in 1x PBS buffer with 0.09% (w/v) sodium azide and 2% sucrose. <i>Note that this product is shipped as lyophilized powder to China customers.</i>
Concentration:	lot specific
Purification:	Affinity Purified
Conjugation:	Unconjugated
Storage:	Store at -20°C as received.
Stability:	Stable for 12 months from date of receipt.
Predicted Protein Size:	17 kDa
Gene Name:	peptidylprolyl isomerase like 3
Database Link:	<a href="#">NP_783638</a> <a href="#">Entrez Gene 301432 Rat Q812D3</a>
Background:	Human homolog catalyzes the cis-trans isomerization of peptidylprolyl imide bonds in oligopeptides.
Synonyms:	CyPJ; OTTHUMP00000206159; PPIase; Rotamase



[View online »](#)

**Note:** Immunogen Sequence Homology: Dog: 100%; Pig: 100%; Rat: 100%; Goat: 100%; Horse: 100%; Human: 100%; Mouse: 100%; Sheep: 100%; Bovine: 100%; Rabbit: 100%; Guinea pig: 100%; Zebrafish: 86%

**Product images:**



Host: Rabbit; Target Name: Ppil3; Sample Tissue: Rat Thymus lysates; Antibody Dilution: 1.0 ug/ml