

## Product datasheet for **TA339876**

### PPIL3 Rabbit Polyclonal Antibody

#### Product data:

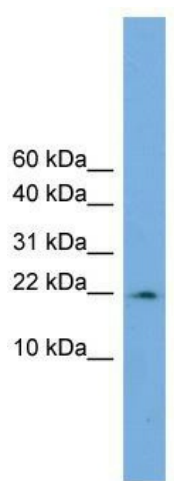
Product Type:	Primary Antibodies
Applications:	WB
Recommended Dilution:	WB
Reactivity:	Human
Host:	Rabbit
Isotype:	IgG
Clonality:	Polyclonal
Immunogen:	The immunogen for anti-PPIL3 antibody: synthetic peptide directed towards the middle region of human PPIL3. Synthetic peptide located within the following region: NYYNGCIFHRNIKGFMVQGTGDPTGTGRGGNSIWGKKFEDEYSEYLNHNVR
Formulation:	Liquid. Purified antibody supplied in 1x PBS buffer with 0.09% (w/v) sodium azide and 2% sucrose. <i>Note that this product is shipped as lyophilized powder to China customers.</i>
Concentration:	lot specific
Purification:	Affinity Purified
Conjugation:	Unconjugated
Storage:	Store at -20°C as received.
Stability:	Stable for 12 months from date of receipt.
Predicted Protein Size:	18
Gene Name:	peptidylprolyl isomerase like 3
Database Link:	<a href="#">NP_570981</a> <a href="#">Entrez Gene 53938 Human</a> <a href="#">Q9H2H8</a>
Background:	This gene encodes a member of the cyclophilin family. Cyclophilins catalyze the cis-trans isomerization of peptidylprolyl imide bonds in oligopeptides. They have been proposed to act either as catalysts or as molecular chaperones in protein-folding events. Alternative splicing results in multiple transcript variants.
Synonyms:	CYPJ



[View online »](#)

**Note:** Immunogen Sequence Homology: Dog: 100%; Pig: 100%; Rat: 100%; Goat: 100%; Horse: 100%; Human: 100%; Mouse: 100%; Sheep: 100%; Bovine: 100%; Rabbit: 100%; Guinea pig: 100%; Yeast: 93%; Zebrafish: 93%

### Product images:



WB Suggested Anti-PPIL3 Antibody Titration: 0.2-1 ug/ml; ELISA Titer: 1: 12500; Positive Control: COLO205 cell lysate PPIL3 is supported by BioGPS gene expression data to be expressed in COLO205