

Product datasheet for **TA339875**

IL33 Rabbit Polyclonal Antibody

Product data:

Product Type:	Primary Antibodies
Applications:	IHC, WB
Recommended Dilution:	WB, IHC
Reactivity:	Human
Host:	Rabbit
Isotype:	IgG
Clonality:	Polyclonal
Immunogen:	The immunogen for anti-IL33 antibody: synthetic peptide directed towards the N terminal of human IL33. Synthetic peptide located within the following region: AKEVCPMYFMKLRSGLMIKKEACYFRRETTKRPSLKTGRKHKRHLVLAAC
Formulation:	Liquid. Purified antibody supplied in 1x PBS buffer with 0.09% (w/v) sodium azide and 2% sucrose. <i>Note that this product is shipped as lyophilized powder to China customers.</i>
Concentration:	lot specific
Purification:	Affinity Purified
Conjugation:	Unconjugated
Storage:	Store at -20°C as received.
Stability:	Stable for 12 months from date of receipt.
Predicted Protein Size:	31 kDa
Gene Name:	interleukin 33
Database Link:	NP_254274 Entrez Gene 90865 Human O95760
Background:	Cytokine that binds to and signals through IL1RL1/ST2 and its stimulation recruits MYD88, IRAK1, IRAK4, and TRAF6, followed by phosphorylation of MAPK3/ERK1 and/or MAPK1/ERK2, MAPK14, and MAPK8. IL33 induces T helper type 2-associated cytokines.
Synonyms:	C9orf26; DVS27; IL1F11; NF-HEV; NFEHEV



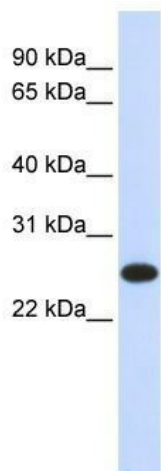
[View online »](#)

Note: Immunogen Sequence Homology: Human: 100%

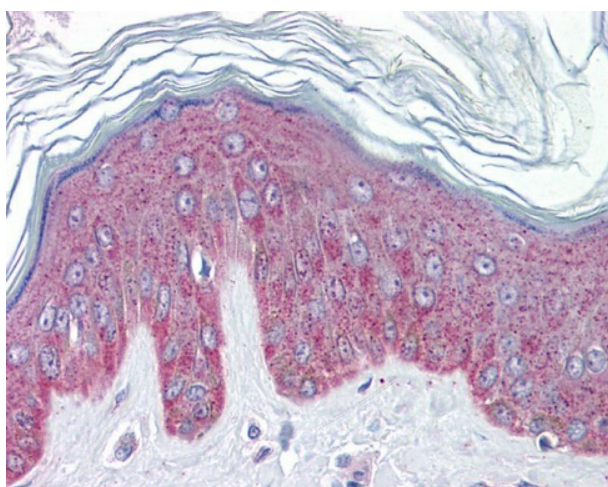
Protein Families: Secreted Protein

Protein Pathways: Cytosolic DNA-sensing pathway

Product images:



WB Suggested Anti-IL33 Antibody Titration: 0.2-1 ug/ml; ELISA Titer: 1: 62500; Positive Control: 293T cell lysate



Skin