

## Product datasheet for **TA339869**

### CDR2 Rabbit Polyclonal Antibody

#### Product data:

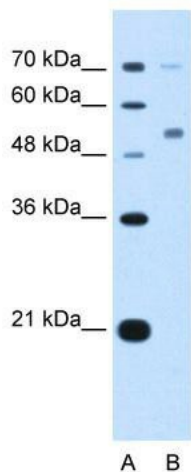
Product Type:	Primary Antibodies
Applications:	IHC, WB
Recommended Dilution:	WB, IHC
Reactivity:	Human
Host:	Rabbit
Isotype:	IgG
Clonality:	Polyclonal
Immunogen:	The immunogen for anti-CDR2 antibody: synthetic peptide directed towards the N terminal of human CDR2. Synthetic peptide located within the following region: MLAENLVEEFEMKEDEPWYDHQDLQQLQLAAELGKTLDRNTELEDSVQ
Formulation:	Liquid. Purified antibody supplied in 1x PBS buffer with 0.09% (w/v) sodium azide and 2% sucrose. <i>Note that this product is shipped as lyophilized powder to China customers.</i>
Concentration:	lot specific
Purification:	Protein A purified
Conjugation:	Unconjugated
Storage:	Store at -20°C as received.
Stability:	Stable for 12 months from date of receipt.
Predicted Protein Size:	52 kDa
Gene Name:	cerebellar degeneration related protein 2
Database Link:	<a href="#">NP_001793</a> <a href="#">Entrez Gene 1039 Human</a> <a href="#">Q01850</a>
Background:	cdr2 normally sequesters c-Myc in the neuronal cytoplasm, thereby down-regulating c-Myc activity, and suggest a mechanism whereby inhibition of cdr2 function by autoantibodies in PCD may contribute to Purkinje neuronal.
Synonyms:	CDR62; Yo



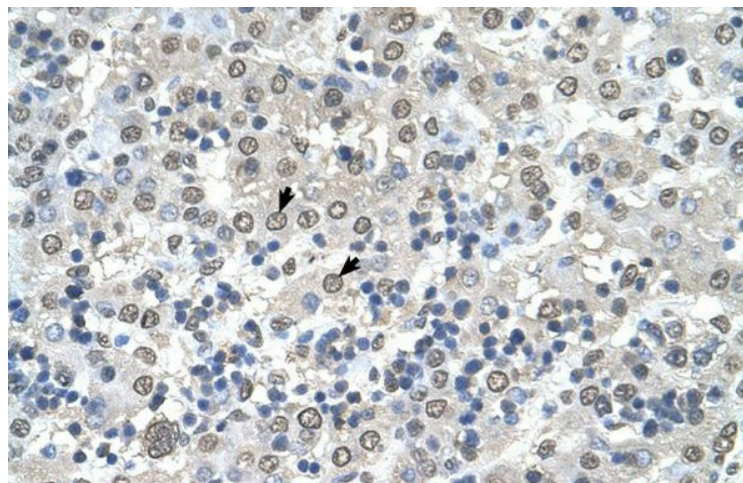
[View online »](#)

**Note:** Immunogen Sequence Homology: Dog: 100%; Pig: 100%; Rat: 100%; Horse: 100%; Human: 100%; Mouse: 100%; Bovine: 100%; Rabbit: 100%; Guinea pig: 100%; Zebrafish: 92%

**Product images:**



WB Suggested Anti-CDR2 Antibody Titration: 5.0 ug/ml; Positive Control: HepG2 cell lysate CDR2 is supported by BioGPS gene expression data to be expressed in HepG2



Human Liver