

Product datasheet for **TA339868**

Apolipoprotein H (APOH) Rabbit Polyclonal Antibody

Product data:

Product Type:	Primary Antibodies
Applications:	WB
Recommended Dilution:	WB
Reactivity:	Human
Host:	Rabbit
Isotype:	IgG
Clonality:	Polyclonal
Immunogen:	The immunogen for anti-APOH antibody: synthetic peptide directed towards the middle region of human APOH. Synthetic peptide located within the following region: PPPSIPTFATLRVYKPSAGNNSLYRDTAVFECLPQHAMFGNDTITCTTHG
Formulation:	Liquid. Purified antibody supplied in 1x PBS buffer with 0.09% (w/v) sodium azide and 2% sucrose. <i>Note that this product is shipped as lyophilized powder to China customers.</i>
Concentration:	lot specific
Purification:	Affinity Purified
Conjugation:	Unconjugated
Storage:	Store at -20°C as received.
Stability:	Stable for 12 months from date of receipt.
Predicted Protein Size:	36 kDa
Gene Name:	apolipoprotein H
Database Link:	NP_000033 Entrez Gene 350 Human P02749
Background:	Apolipoprotein H has been implicated in a variety of physiologic pathways including lipoprotein metabolism, coagulation, and the production of antiphospholipid autoantibodies. APOH may be a required cofactor for anionic phospholipid binding by the antiphospholipid antibody.
Synonyms:	B2G1; B2GP1; BG

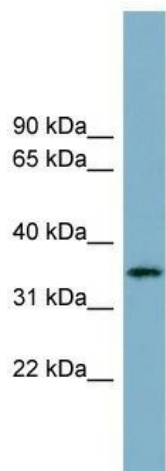


[View online »](#)

Note: Immunogen Sequence Homology: Human: 100%; Rat: 92%; Pig: 91%; Mouse: 86%; Guinea pig: 86%; Rabbit: 79%

Protein Families: Druggable Genome, Secreted Protein

Product images:



WB Suggested Anti-APOH Antibody Titration: 0.2-1 ug/ml; ELISA Titer: 1: 1562500; Positive Control: Human Spleen