

Product datasheet for **TA339866**

SULT2B1 Rabbit Polyclonal Antibody

Product data:

Product Type:	Primary Antibodies
Applications:	WB
Recommended Dilution:	WB
Reactivity:	Human
Host:	Rabbit
Isotype:	IgG
Clonality:	Polyclonal
Immunogen:	The immunogen for anti-SULT2B1 antibody: synthetic peptide directed towards the N terminal of human SULT2B1. Synthetic peptide located within the following region: MASPPPFHSQKLPGEYFRYKGVFPVGLYSLESISLAENTQDVRDDDFI
Formulation:	Liquid. Purified antibody supplied in 1x PBS buffer with 0.09% (w/v) sodium azide and 2% sucrose. <i>Note that this product is shipped as lyophilized powder to China customers.</i>
Concentration:	lot specific
Purification:	Affinity Purified
Conjugation:	Unconjugated
Storage:	Store at -20°C as received.
Stability:	Stable for 12 months from date of receipt.
Predicted Protein Size:	39 kDa
Gene Name:	sulfotransferase family 2B member 1
Database Link:	NP_004596 Entrez Gene 6820 Human O00204
Background:	Sulfotransferase enzymes catalyze the sulfate conjugation of many hormones, neurotransmitters, drugs, and xenobiotic compounds. These cytosolic enzymes are different in their tissue distributions and substrate specificities. The gene structure (number and
Synonyms:	HSST2

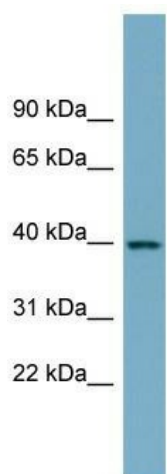


[View online »](#)

Note: Immunogen Sequence Homology: Human: 100%

Protein Pathways: Androgen and estrogen metabolism, Sulfur metabolism

Product images:



WB Suggested Anti-SULT2B1 Antibody Titration:
0.2-1 ug/ml; ELISA Titer: 1: 62500; Positive
Control: Human Spleen