

Product datasheet for **TA339865**

PHC1 Rabbit Polyclonal Antibody

Product data:

Product Type:	Primary Antibodies
Applications:	WB
Recommended Dilution:	WB
Reactivity:	Human
Host:	Rabbit
Isotype:	IgG
Clonality:	Polyclonal
Immunogen:	The immunogen for Anti-DKFZp686A1782 antibody is: synthetic peptide directed towards the C-terminal region of Human DKFZp686A1782. Synthetic peptide located within the following region: PLSVRAGHGERDLGNPNTAPPTPELHGINPVFLSSNPSRWSVEEVYEFIA
Formulation:	Liquid. Purified antibody supplied in 1x PBS buffer with 0.09% (w/v) sodium azide and 2% sucrose. <i>Note that this product is shipped as lyophilized powder to China customers.</i>
Concentration:	lot specific
Purification:	Affinity Purified
Conjugation:	Unconjugated
Storage:	Store at -20°C as received.
Stability:	Stable for 12 months from date of receipt.
Predicted Protein Size:	67 kDa
Gene Name:	polyhomeotic homolog 1
Database Link:	NP_004417 Entrez Gene 1911 Human P78364



[View online »](#)

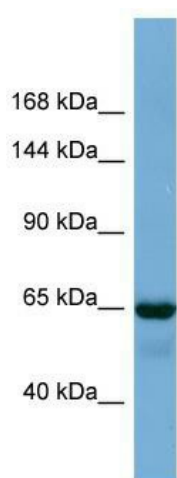
Background: This gene is a homolog of the *Drosophila* polyhomeotic gene, which is a member of the Polycomb group of genes. The gene product is a component of a multimeric protein complex that contains EDR2 and the vertebrate Polycomb protein BMH1. The gene product, the EDR2 protein, and the *Drosophila* polyhomeotic protein share 2 highly conserved domains, named homology domains I and II. These domains are involved in protein-protein interactions and may mediate heterodimerization of the protein encoded by this gene and the EDR2 protein.

Synonyms: EDR1; HPH1; MCPH11; RAE28

Note: Immunogen Sequence Homology: Horse: 100%; Human: 100%; Bovine: 100%; Dog: 93%; Pig: 93%; Rabbit: 93%; Rat: 86%

Protein Families: ES Cell Differentiation/IPS, Stem cell - Pluripotency

Product images:



Host: Rabbit; Target Name: PHC1; Sample Tissue: Fetal Lung lysates; Antibody Dilution: 1.0 ug/ml