

Product datasheet for **TA339863**

Rbpj Rabbit Polyclonal Antibody

Product data:

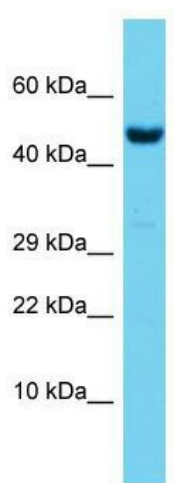
Product Type:	Primary Antibodies
Applications:	WB
Recommended Dilution:	WB
Reactivity:	Mouse
Host:	Rabbit
Isotype:	IgG
Clonality:	Polyclonal
Immunogen:	The immunogen for Anti-Rbpj antibody is: synthetic peptide directed towards the middle region of Mouse Rbpj. Synthetic peptide located within the following region: MGPVLAPVTPVPVVESLQLNGGGDVAMLELTGQNFTPnlRVWFGDVEAET
Formulation:	Liquid. Purified antibody supplied in 1x PBS buffer with 0.09% (w/v) sodium azide and 2% sucrose. <i>Note that this product is shipped as lyophilized powder to China customers.</i>
Concentration:	lot specific
Purification:	Affinity Purified
Conjugation:	Unconjugated
Storage:	Store at -20°C as received.
Stability:	Stable for 12 months from date of receipt.
Predicted Protein Size:	54 kDa
Gene Name:	recombination signal binding protein for immunoglobulin kappa J region
Database Link:	NP_001074396 Entrez Gene 19664 Mouse P31266
Background:	The function of this protein remains unknown.
Synonyms:	CBF-1; CBF1; csl; IGKJRB; IGKJRB1; KBF2; MGC61669; OTTHUMP00000123441; RBP-J; RBP-JK; RBPJK; RBPSUH; SUH



[View online »](#)

Note: Immunogen Sequence Homology: Human: 100%; Dog: 92%; Pig: 92%; Rat: 92%; Horse: 92%; Mouse: 92%; Bovine: 92%; Rabbit: 92%; Zebrafish: 92%; Guinea pig: 92%

Product images:



Host: Rabbit; Target Name: Rbpj; Sample Tissue: Mouse Testis lysates; Antibody Dilution: 1.0 ug/ml