

## Product datasheet for **TA339862**

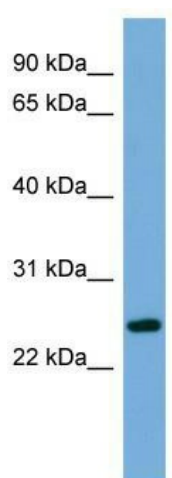
### **FAM164B (ZC2HC1B) Rabbit Polyclonal Antibody**

#### **Product data:**

<b>Product Type:</b>	Primary Antibodies
<b>Applications:</b>	WB
<b>Recommended Dilution:</b>	WB
<b>Reactivity:</b>	Human
<b>Host:</b>	Rabbit
<b>Isotype:</b>	IgG
<b>Clonality:</b>	Polyclonal
<b>Immunogen:</b>	The immunogen for anti-C6orf94 antibody: synthetic peptide directed towards the N terminal of human C6orf94. Synthetic peptide located within the following region: PICKKLFNRKRKPFSSLKQRLQGTDIPTVKKTPQSKSPPVRKSNWRQQHE
<b>Formulation:</b>	Liquid. Purified antibody supplied in 1x PBS buffer with 0.09% (w/v) sodium azide and 2% sucrose. <i>Note that this product is shipped as lyophilized powder to China customers.</i>
<b>Concentration:</b>	lot specific
<b>Purification:</b>	Affinity Purified
<b>Conjugation:</b>	Unconjugated
<b>Storage:</b>	Store at -20°C as received.
<b>Stability:</b>	Stable for 12 months from date of receipt.
<b>Predicted Protein Size:</b>	25 kDa
<b>Gene Name:</b>	zinc finger C2HC-type containing 1B
<b>Database Link:</b>	<a href="#">NP_001013645</a> <a href="#">Entrez Gene 153918 Human</a> <a href="#">Q5TFG8</a>
<b>Background:</b>	The function of C6orf94 remains unknown.
<b>Synonyms:</b>	C6orf94; dj468K18.5; FAM164B
<b>Note:</b>	Immunogen Sequence Homology: Human: 100%; Pig: 79%; Rat: 79%; Bovine: 79%; Guinea pig: 79%



[View online »](#)

**Product images:**

WB Suggested Anti-ZC2HC1B Antibody Titration:  
0.125 ug/ml; ELISA Titer: 1: 312500; Positive  
Control: 721\_B cell lysate