

## Product datasheet for **TA339861**

### Dux4 (DUX4L1) Rabbit Polyclonal Antibody

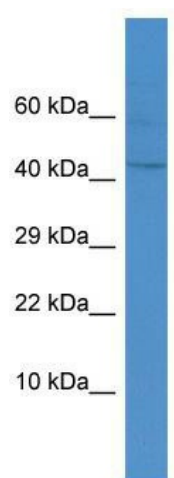
#### Product data:

Product Type:	Primary Antibodies
Applications:	WB
Recommended Dilution:	WB
Reactivity:	Human
Host:	Rabbit
Isotype:	IgG
Clonality:	Polyclonal
Immunogen:	The immunogen for Anti-DUX4 antibody is: synthetic peptide directed towards the middle region of Human DUX4. Synthetic peptide located within the following region: ESRPWPGRRGPPGRRKRTAVTGSQTALLLRAFEKDRFPGIAAREELARE
Formulation:	Liquid. Purified antibody supplied in 1x PBS buffer with 0.09% (w/v) sodium azide and 2% sucrose. <i>Note that this product is shipped as lyophilized powder to China customers.</i>
Concentration:	lot specific
Purification:	Affinity Purified
Conjugation:	Unconjugated
Storage:	Store at -20°C as received.
Stability:	Stable for 12 months from date of receipt.
Predicted Protein Size:	46 kDa
Gene Name:	double homeobox 4 like 1
Database Link:	<a href="#">NP_149418</a> <a href="#">Entrez Gene 22947 Human</a>
Background:	DUX4 is involved in transcriptional regulation.
Synonyms:	DUX10
Note:	Immunogen Sequence Homology: Human: 85%



[View online »](#)

## Product images:



Host: Rabbit; Target Name: DUX4; Sample Tissue: THP-1 Whole cell lysates; Antibody Dilution: 1.0 ug/ml