

Product datasheet for **TA339858**

ANHX Rabbit Polyclonal Antibody

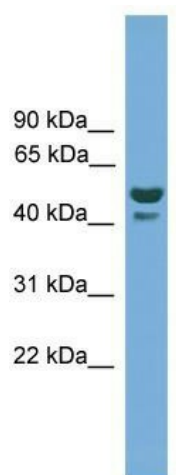
Product data:

Product Type:	Primary Antibodies
Applications:	WB
Recommended Dilution:	WB
Reactivity:	Human
Host:	Rabbit
Isotype:	IgG
Clonality:	Polyclonal
Immunogen:	The immunogen for anti-hCG_2007354 antibody: synthetic peptide directed towards the n terminal of human hCG_2007354. Synthetic peptide located within the following region: LRLHLLDNADVALACARVLDQQEQQAACRLLEGCVPGGSQELVQLWND
Formulation:	Liquid. Purified antibody supplied in 1x PBS buffer with 0.09% (w/v) sodium azide and 2% sucrose. <i>Note that this product is shipped as lyophilized powder to China customers.</i>
Concentration:	lot specific
Purification:	Affinity Purified
Conjugation:	Unconjugated
Storage:	Store at -20°C as received.
Stability:	Stable for 12 months from date of receipt.
Predicted Protein Size:	42 kDa
Gene Name:	anomalous homeobox
Database Link:	NP_001177983 Entrez Gene 647589 Human E9PGG2
Background:	The function of this protein remains unknown.
Synonyms:	ANHX
Note:	Immunogen Sequence Homology: Human: 100%; Rabbit: 93%; Dog: 86%; Horse: 79%



[View online »](#)

Product images:



WB Suggested Anti-ANHX Antibody Titration: 0.2-1 ug/ml; Positive Control: Human heart