

Product datasheet for **TA339857**

ZNF701 Rabbit Polyclonal Antibody

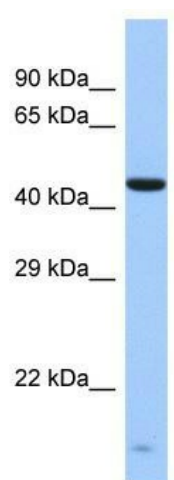
Product data:

Product Type:	Primary Antibodies
Applications:	WB
Recommended Dilution:	WB
Reactivity:	Human
Host:	Rabbit
Isotype:	IgG
Clonality:	Polyclonal
Immunogen:	The immunogen for Anti-ZNF701 antibody is: synthetic peptide directed towards the middle region of Human ZNF701. Synthetic peptide located within the following region: DFHQKRYLACHRCTGENPYTCNECGKTFSHNSALLVHKAIHTGEKPYKC
Formulation:	Liquid. Purified antibody supplied in 1x PBS buffer with 0.09% (w/v) sodium azide and 2% sucrose.
Concentration:	lot specific
Purification:	Affinity Purified
Conjugation:	Unconjugated
Storage:	Store at -20°C as received.
Stability:	Stable for 12 months from date of receipt.
Predicted Protein Size:	51 kDa
Gene Name:	zinc finger protein 701
Database Link:	NP_060730 Entrez Gene 55762 Human Q9NV72
Background:	ZNF701 belongs to the krueppel C2H2-type zinc-finger protein family. It contains 7 C2H2-type zinc fingers and KRAB domain. ZNF701 may be involved in transcriptional regulation.
Synonyms:	FLJ10891
Note:	Immunogen Sequence Homology: Human: 100%; Mouse: 92%; Zebrafish: 90%; Bovine: 86%; Rat: 83%; Dog: 79%; Pig: 79%; Horse: 79%; Rabbit: 79%


[View online »](#)

Protein Families: Transcription Factors

Product images:



Host: Rabbit; Target Name: ZNF701; Sample
Tissue: Fetal Liver lysates; Antibody Dilution: 1.0
ug/ml