

## Product datasheet for **TA339855**

### ZNF679 Rabbit Polyclonal Antibody

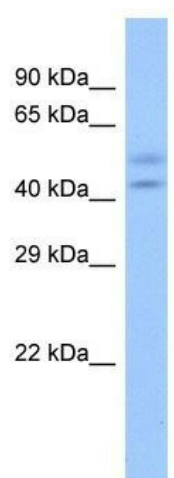
#### Product data:

Product Type:	Primary Antibodies
Applications:	WB
Recommended Dilution:	WB
Reactivity:	Human
Host:	Rabbit
Isotype:	IgG
Clonality:	Polyclonal
Immunogen:	The immunogen for Anti-ZNF679 antibody is: synthetic peptide directed towards the N-terminal region of Human ZNF679. Synthetic peptide located within the following region: VQKGGCNEVNQCLSTTQNKIFQTHKCVKVFVGKFSNSNRHKTRHTGKKHFK
Formulation:	Liquid. Purified antibody supplied in 1x PBS buffer with 0.09% (w/v) sodium azide and 2% sucrose. <i>Note that this product is shipped as lyophilized powder to China customers.</i>
Concentration:	lot specific
Purification:	Affinity Purified
Conjugation:	Unconjugated
Storage:	Store at -20°C as received.
Stability:	Stable for 12 months from date of receipt.
Predicted Protein Size:	45 kDa
Gene Name:	zinc finger protein 679
Database Link:	<a href="#">NP_699194</a> <a href="#">Entrez Gene 168417 Human Q8IYX0</a>
Background:	ZNF679 may be involved in transcriptional regulation.
Synonyms:	MGC42415
Note:	Immunogen Sequence Homology: Human: 100%



[View online »](#)

## Product images:



Host: Rabbit; Target Name: ZNF679; Sample  
Tissue: Fetal Heart lysates; Antibody Dilution: 1.0  
ug/ml