

## Product datasheet for **TA339852**

### SEC22C Rabbit Polyclonal Antibody

#### Product data:

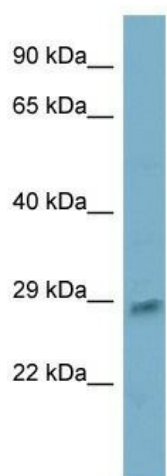
Product Type:	Primary Antibodies
Applications:	WB
Recommended Dilution:	WB
Reactivity:	Human
Host:	Rabbit
Isotype:	IgG
Clonality:	Polyclonal
Immunogen:	The immunogen for anti-ING5 antibody: synthetic peptide directed towards the N terminal of human ING5. Synthetic peptide located within the following region: TEDKKAIEIDILAAEYISTVKTLSPDQRVERLQKIQNAYSCKKEYSDDKVQ
Formulation:	Liquid. Purified antibody supplied in 1x PBS buffer with 0.09% (w/v) sodium azide and 2% sucrose. <i>Note that this product is shipped as lyophilized powder to China customers.</i>
Concentration:	lot specific
Purification:	Affinity Purified
Conjugation:	Unconjugated
Storage:	Store at -20°C as received.
Stability:	Stable for 12 months from date of receipt.
Predicted Protein Size:	28 kDa
Gene Name:	SEC22 homolog C, vesicle trafficking protein
Database Link:	<a href="#">NP_116752</a> <a href="#">Entrez Gene 9117 Human</a> <a href="#">Q9BRL7</a>
Background:	The function of this protein remains unknown.
Synonyms:	SEC22L3
Note:	Immunogen Sequence Homology: Human: 100%; Dog: 92%; Pig: 92%; Rat: 92%; Horse: 92%; Zebrafish: 92%; Guinea pig: 92%; Bovine: 85%; Mouse: 77%; Rabbit: 77%



[View online »](#)

Protein Families: Transmembrane

### Product images:



WB Suggested Anti-ING5 Antibody Titration: 0.2-1 ug/ml; ELISA Titer: 1: 62500; Positive Control: OVCAR-3 cell lysate