

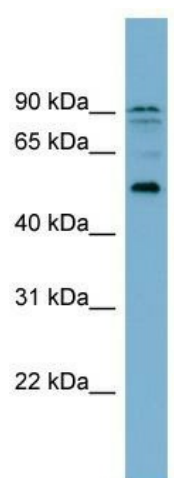
Product datasheet for **TA339848**

ZNF662 Rabbit Polyclonal Antibody

Product data:

| | |
|-------------------------|---|
| Product Type: | Primary Antibodies |
| Applications: | WB |
| Recommended Dilution: | WB |
| Reactivity: | Human |
| Host: | Rabbit |
| Isotype: | IgG |
| Clonality: | Polyclonal |
| Immunogen: | The immunogen for anti-ZNF662 antibody: synthetic peptide directed towards the middle region of human ZNF662. Synthetic peptide located within the following region: QIFYICEECGKCFDQNEFDQHQKTHNGEKVYGCKEKGKAFSFRSHCIAH |
| Formulation: | Liquid. Purified antibody supplied in 1x PBS buffer with 0.09% (w/v) sodium azide and 2% sucrose. |
| Concentration: | lot specific |
| Purification: | Affinity Purified |
| Conjugation: | Unconjugated |
| Storage: | Store at -20°C as received. |
| Stability: | Stable for 12 months from date of receipt. |
| Predicted Protein Size: | 51 kDa |
| Gene Name: | zinc finger protein 662 |
| Database Link: | NP_001128128 Entrez Gene 389114 Human Q6ZS27 |
| Background: | The function of this protein remains unknown. |
| Synonyms: | FLJ33347; FLJ45880; MGC149141 |
| Note: | Immunogen Sequence Homology: Human: 100%; Pig: 86%; Dog: 79%; Horse: 79% |


[View online »](#)

Product images:


WB Suggested Anti-ZNF662 Antibody Titration:
0.2-1 ug/ml; Positive Control: OVCAR-3 cell lysate