

Product datasheet for **TA339847**

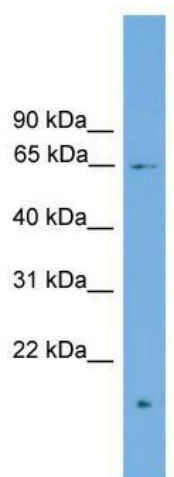
ZNF320 Rabbit Polyclonal Antibody

Product data:

Product Type:	Primary Antibodies
Applications:	WB
Recommended Dilution:	WB
Reactivity:	Human
Host:	Rabbit
Isotype:	IgG
Clonality:	Polyclonal
Immunogen:	The immunogen for anti-ZNF320 antibody: synthetic peptide directed towards the N terminal of human ZNF320. Synthetic peptide located within the following region: NDHEAPMTEIKKLTSSDRYDQRHAGNKPIKGQLESRFHLHLRRHRIHT
Formulation:	Liquid. Purified antibody supplied in 1x PBS buffer with 0.09% (w/v) sodium azide and 2% sucrose.
Concentration:	lot specific
Purification:	Affinity Purified
Conjugation:	Unconjugated
Storage:	Store at -20°C as received.
Stability:	Stable for 12 months from date of receipt.
Predicted Protein Size:	59 kDa
Gene Name:	zinc finger protein 320
Database Link:	NP_997216 Entrez Gene 162967 Human A2RRD8
Background:	ZNF320 may be involved in transcriptional regulation.
Synonyms:	ZFPL
Note:	Immunogen Sequence Homology: Human: 100%



[View online »](#)

Product images:


WB Suggested Anti-ZNF320 Antibody Titration:
0.2-1 ug/ml; ELISA Titer: 1: 1562500; Positive
Control: MCF7 cell lysate