

Product datasheet for **TA339842**

CtIP (RBBP8) Rabbit Polyclonal Antibody

Product data:

Product Type:	Primary Antibodies
Applications:	WB
Recommended Dilution:	WB
Reactivity:	Human
Host:	Rabbit
Isotype:	IgG
Clonality:	Polyclonal
Immunogen:	The immunogen for anti-RBBP8 antibody: synthetic peptide directed towards the C terminal of human RBBP8. Synthetic peptide located within the following region: ETVDM DCTLVSETVLLKMKKQE QKGEKSSNEERKM NDSLEDMFDR TT HEE
Formulation:	Liquid. Purified antibody supplied in 1x PBS buffer with 0.09% (w/v) sodium azide and 2% sucrose. <i>Note that this product is shipped as lyophilized powder to China customers.</i>
Concentration:	lot specific
Purification:	Affinity Purified
Conjugation:	Unconjugated
Storage:	Store at -20°C as received.
Stability:	Stable for 12 months from date of receipt.
Predicted Protein Size:	98 kDa
Gene Name:	RB binding protein 8, endonuclease
Database Link:	NP_976037 Entrez Gene 5932 Human Q99708



[View online »](#)

Background:

RBBP8 is a ubiquitously expressed nuclear protein. It is found among several proteins that bind directly to retinoblastoma protein, which regulates cell proliferation. This protein complexes with transcriptional co-repressor CTBP. It is also associated with BRCA1 and is thought to modulate the functions of BRCA1 in transcriptional regulation, DNA repair, and/or cell cycle checkpoint control. It is suggested that this gene may itself be a tumor suppressor acting in the same pathway as BRCA1. Three transcript variants encoding two different isoforms have been found for this gene. More transcript variants exist, but their full-length natures have not been determined. The protein encoded by this gene is a ubiquitously expressed nuclear protein. It is found among several proteins that bind directly to retinoblastoma protein, which regulates cell proliferation. This protein complexes with transcriptional co-repressor CTBP. It is also associated with BRCA1 and is thought to modulate the functions of BRCA1 in transcriptional regulation, DNA repair, and/or cell cycle checkpoint control. It is suggested that this gene may itself be a tumor suppressor acting in the same pathway as BRCA1. Three transcript variants encoding two different isoforms have been found for this gene. More transcript variants exist, but their full-length natures have not been determined.

Synonyms:

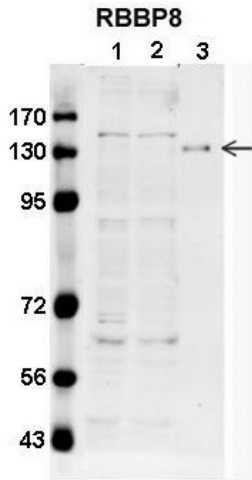
COM1; CTIP; JWDS; RIM; SAE2; SCKL2

Note:

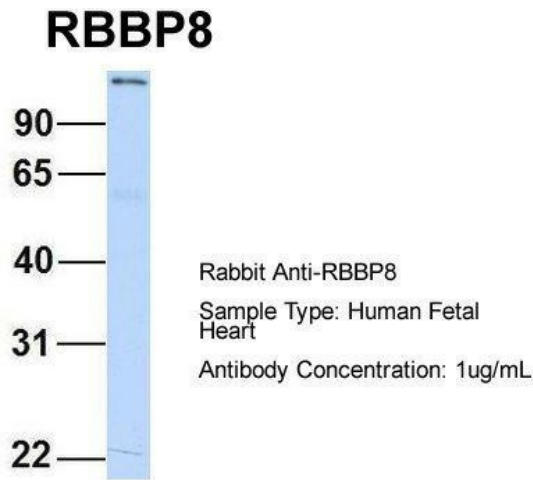
Immunogen Sequence Homology: Pig: 100%; Human: 100%; Rabbit: 100%; Dog: 86%; Guinea pig: 83%; Horse: 79%; Bovine: 79%

Product images:

WB Suggested Anti-RBBP8 Antibody Titration: 0.2-1 ug/ml; ELISA Titer: 1: 312500; Positive Control: Human Placenta



Sample type: 1. HCT116 lysate (50 ug); 2. MCF7 lysate (50 ug); 3. rCtIP (30 ng); Primary Dilution: 1: 1000; Secondary Antibody: anti-Rabbit IR700; Secondary Dilution: 1: 5000; Image Submitted by: Nodar Makharashvili; University of Texas, Austin



Host: Rabbit; Target Name: RBBP8; Sample Tissue: Human Fetal Heart; Antibody Dilution: 1.0 ug/ml