

## Product datasheet for **TA339840**

### ZNF468 Rabbit Polyclonal Antibody

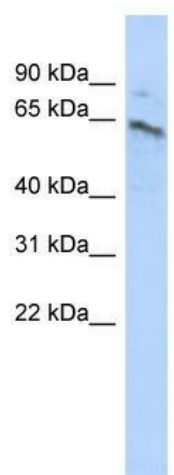
#### Product data:

Product Type:	Primary Antibodies
Applications:	WB
Recommended Dilution:	WB
Reactivity:	Human
Host:	Rabbit
Isotype:	IgG
Clonality:	Polyclonal
Immunogen:	The immunogen for anti-ZNF468 antibody: synthetic peptide directed towards the middle region of human ZNF468. Synthetic peptide located within the following region: FIIHKALHTGEKPYECECDKVFSRKSHLERHKRIHTGEKPYKCKVCDEAF
Formulation:	Liquid. Purified antibody supplied in 1x PBS buffer with 0.09% (w/v) sodium azide and 2% sucrose.
Concentration:	lot specific
Purification:	Affinity Purified
Conjugation:	Unconjugated
Storage:	Store at -20°C as received.
Stability:	Stable for 12 months from date of receipt.
Predicted Protein Size:	60 kDa
Gene Name:	zinc finger protein 468
Database Link:	<a href="#">NP_001008801</a> <a href="#">Entrez Gene 90333 Human</a> <a href="#">Q5VIY5</a>
Background:	ZNF468 may be involved in transcriptional regulation.
Synonyms:	DKFZp781B1474; DKFZp781N07108
Note:	Immunogen Sequence Homology: Human: 100%; Mouse: 100%; Bovine: 100%; Zebrafish: 100%; Rat: 92%; Horse: 92%



[View online »](#)

## Product images:



WB Suggested Anti-ZNF468 Antibody Titration:  
0.2-1 ug/ml; ELISA Titer: 1: 1562500; Positive  
Control: PANC1 cell lysate